

Energy, Economic and Climate Indicators



All U.S. States & D.C.

FEBRUARY, 2021

Energy, Economic and Climate Indicators

Context

Since 1990, the US economy became much more efficient, producing high volumes of economic output with less energy use and fewer emissions. Tracking publicly available metrics over time provides an invaluable method to assess progress of the combined impact of public policies at both national and state levels.

1990 is an appropriate baseline because:

1. Over the last three decades, and particularly over the last decade, economic growth frequently has occurred independent of electric load growth or increased reliance upon fossil fuel consumption.
2. Many local, national, and international climate targets were set as reductions in greenhouse gas emissions from 1990.

Between 1990 and 2018, national Gross Domestic Product (GDP) more than doubled, population grew by nearly a third, energy use increased by 20 percent, and sector-wide industrial energy use increased by 3 percent. Yet after rising during the 1990s-2000s, nationwide emissions fell in the past decade to be only 5 percent higher than emissions in 1990. These trends become even more apparent when focusing on changes to economic and environmental indicators following the 2008-09 recession. While cumulative Gross State Product (GSP) grew by 19 percent from 2010-18, energy use grew by just 4 percent, electricity consumption dropped by 4 percent, and nationwide emissions dropped by 5 percent. Since the recession, the economy grew while emissions declined substantially.

Data Sources

Emissions data comes from the EIA tables on State Carbon Dioxide Emissions from Fossil Fuels:

<https://www.eia.gov/environment/emissions/state/>

All other data comes from the EIA State Energy Data System (SEDS) database:

<https://www.eia.gov/state/seds/seds-data-fuel.php?sid=US#DataFiles>

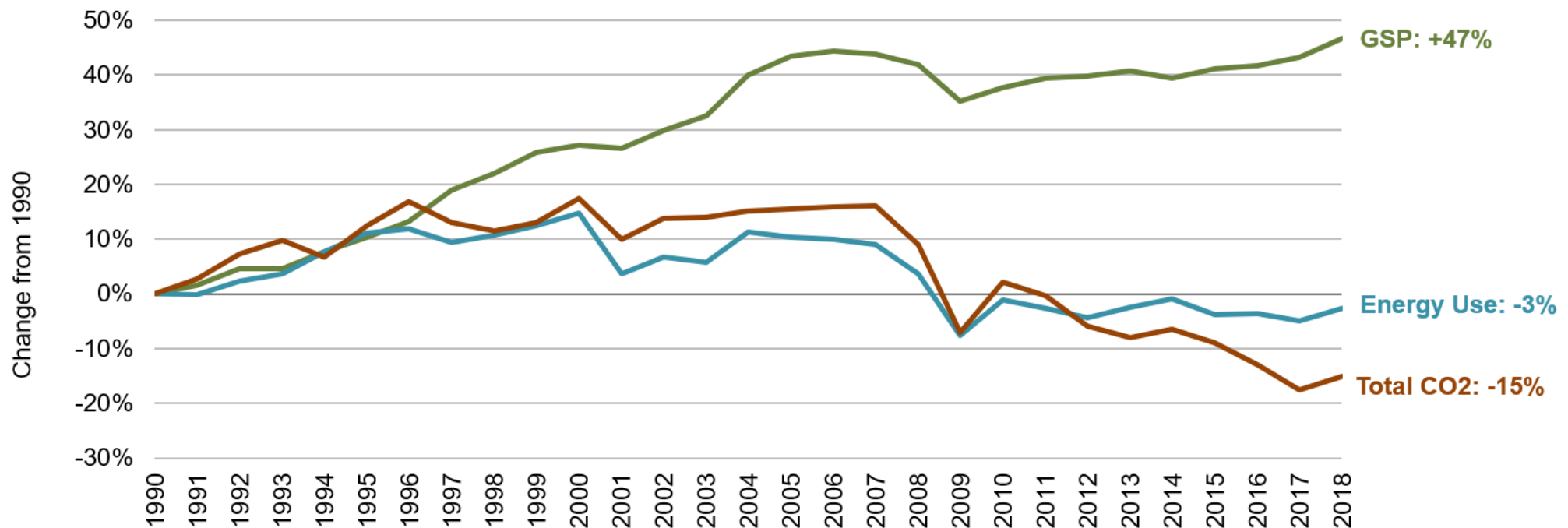
Using the following MSN Codes:

Population: TPOP
Gross State Product: GDPRX
Total Energy Use: TETCB
Industrial Energy Use: TEICB

Per Capita Energy, Economic and Climate Indicators



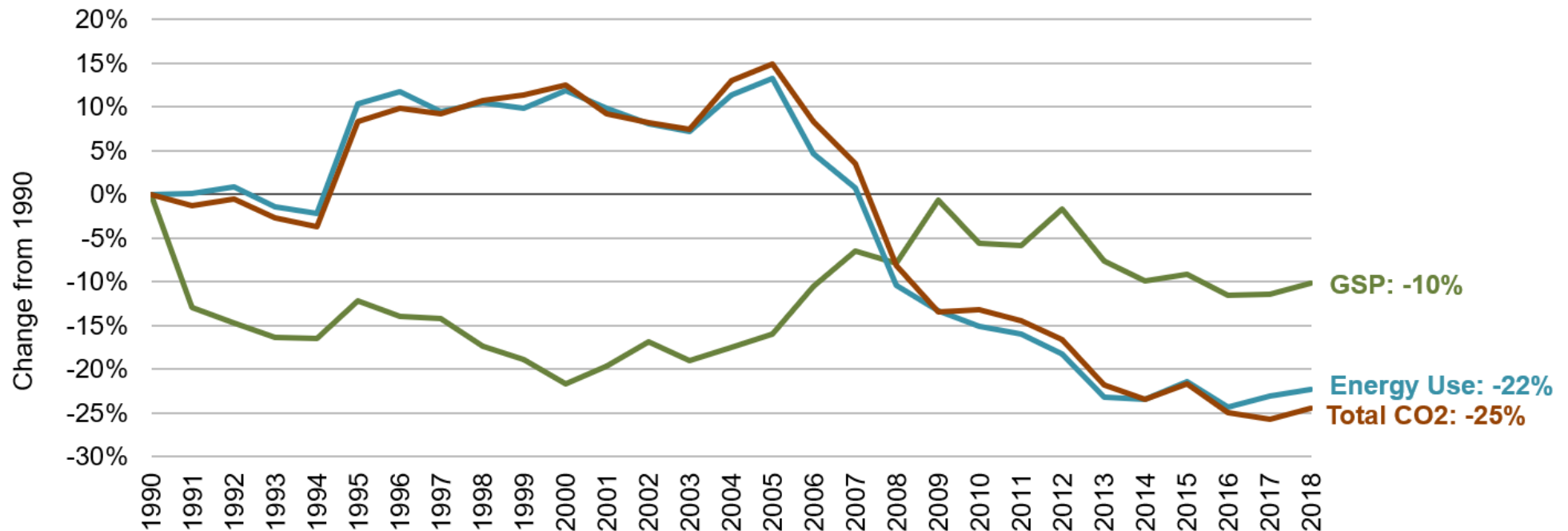
Alabama
1990-2018



Per Capita Energy, Economic and Climate Indicators



Alaska
1990-2018



Per Capita Energy, Economic and Climate Indicators



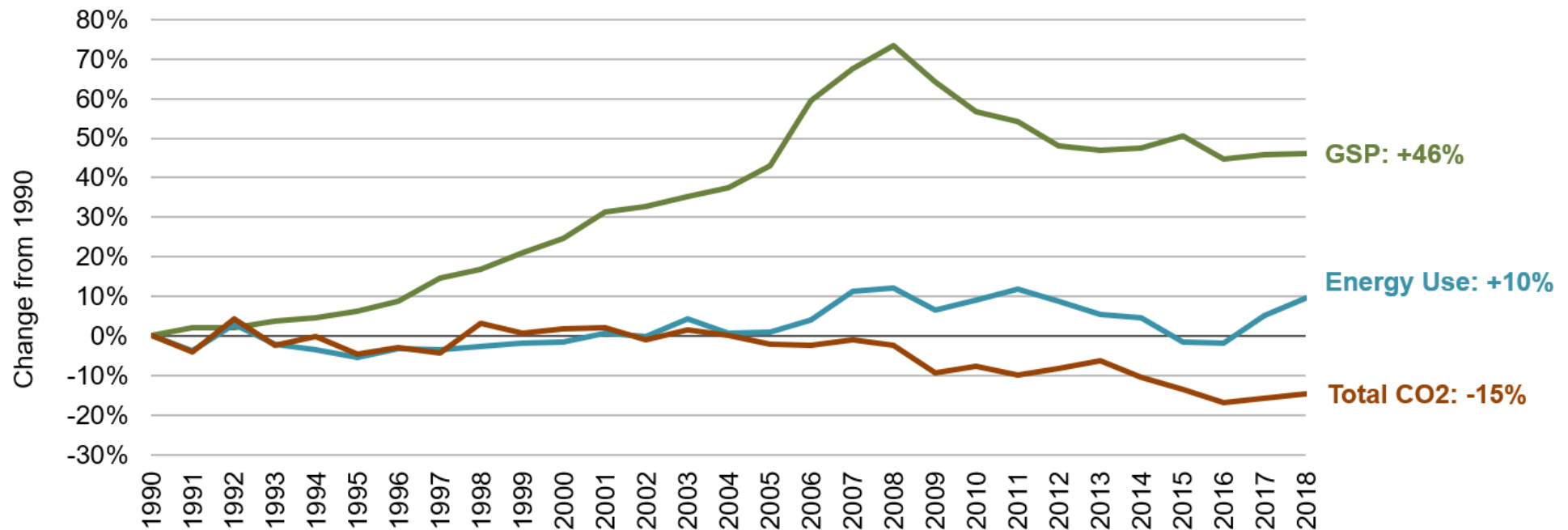
Arizona
1990-2018



Per Capita Energy, Economic and Climate Indicators



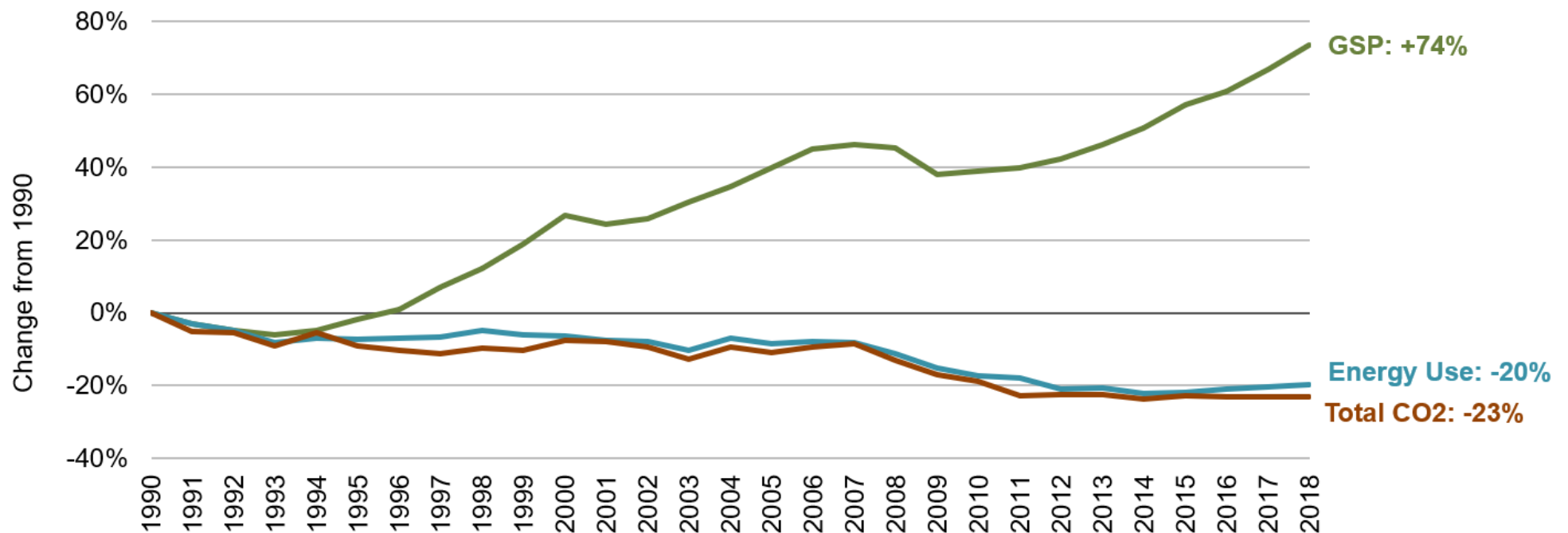
Arkansas
1990-2018



Per Capita Energy, Economic and Climate Indicators



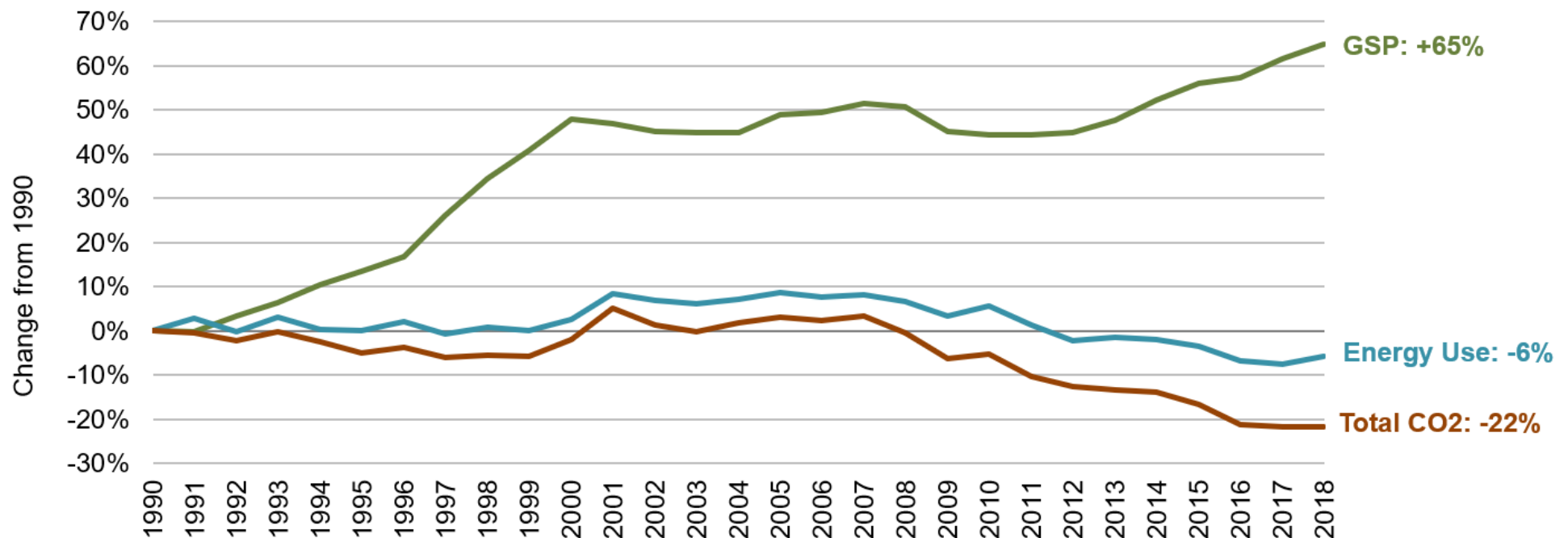
California
1990-2018



Per Capita Energy, Economic and Climate Indicators



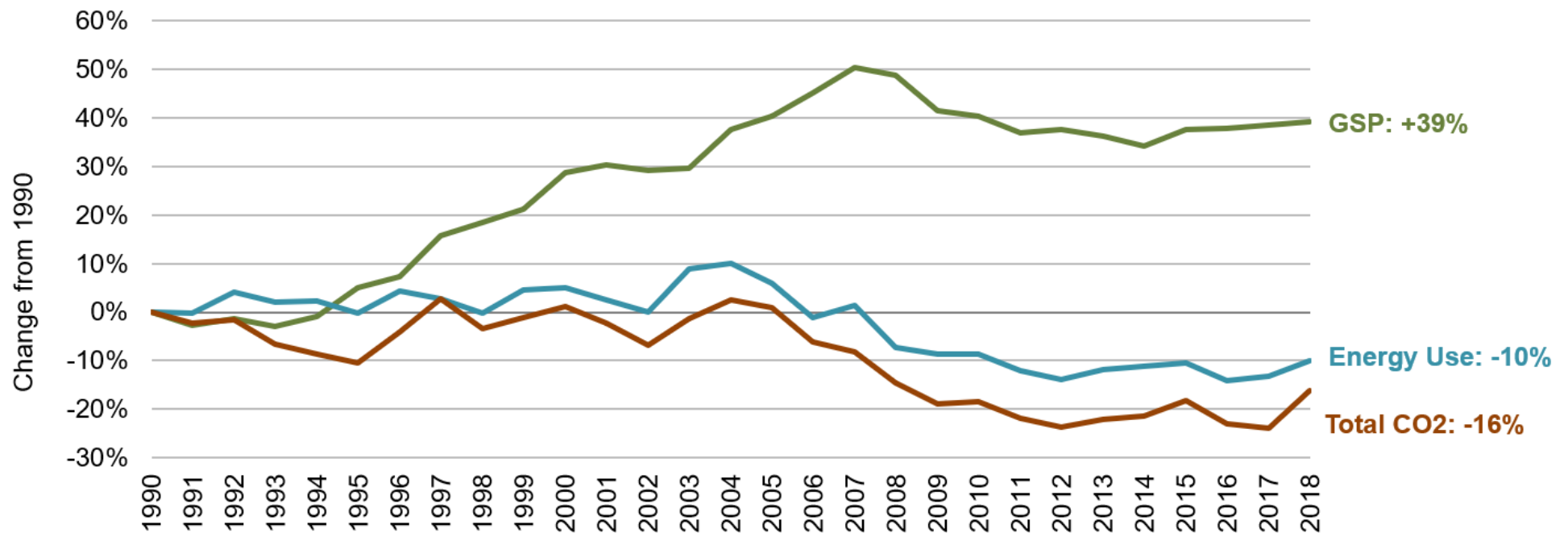
Colorado
1990-2018



Per Capita Energy, Economic and Climate Indicators



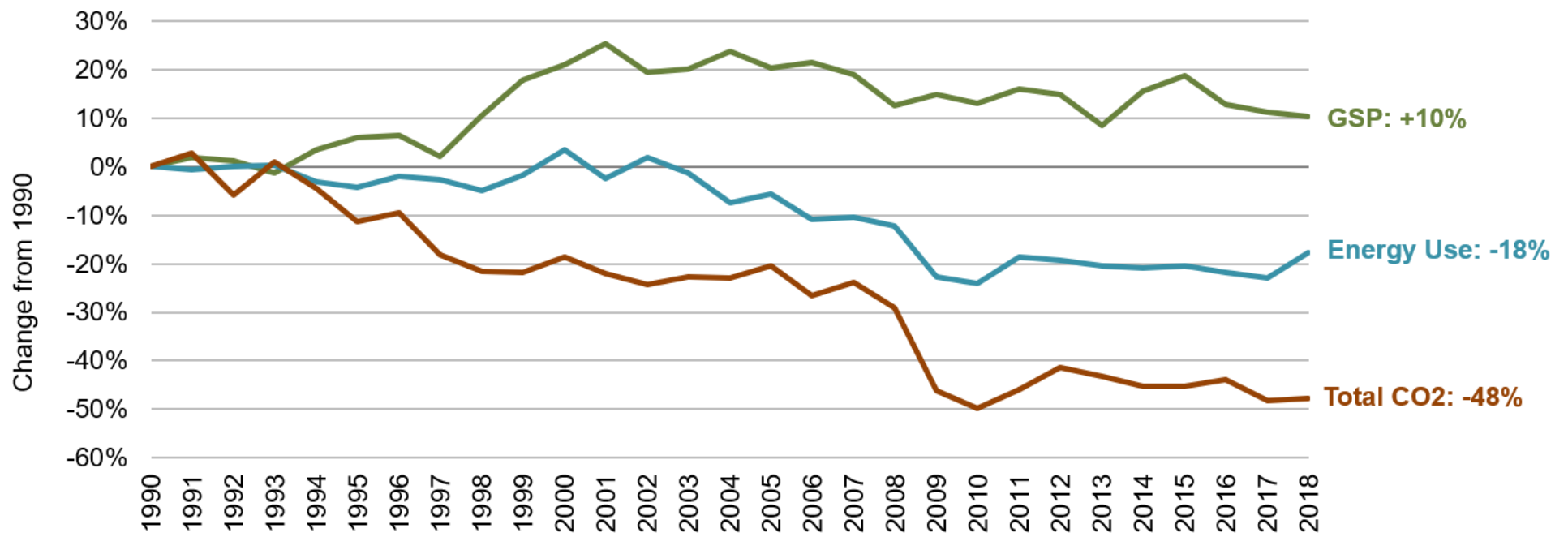
Connecticut
1990-2018



Per Capita Energy, Economic and Climate Indicators



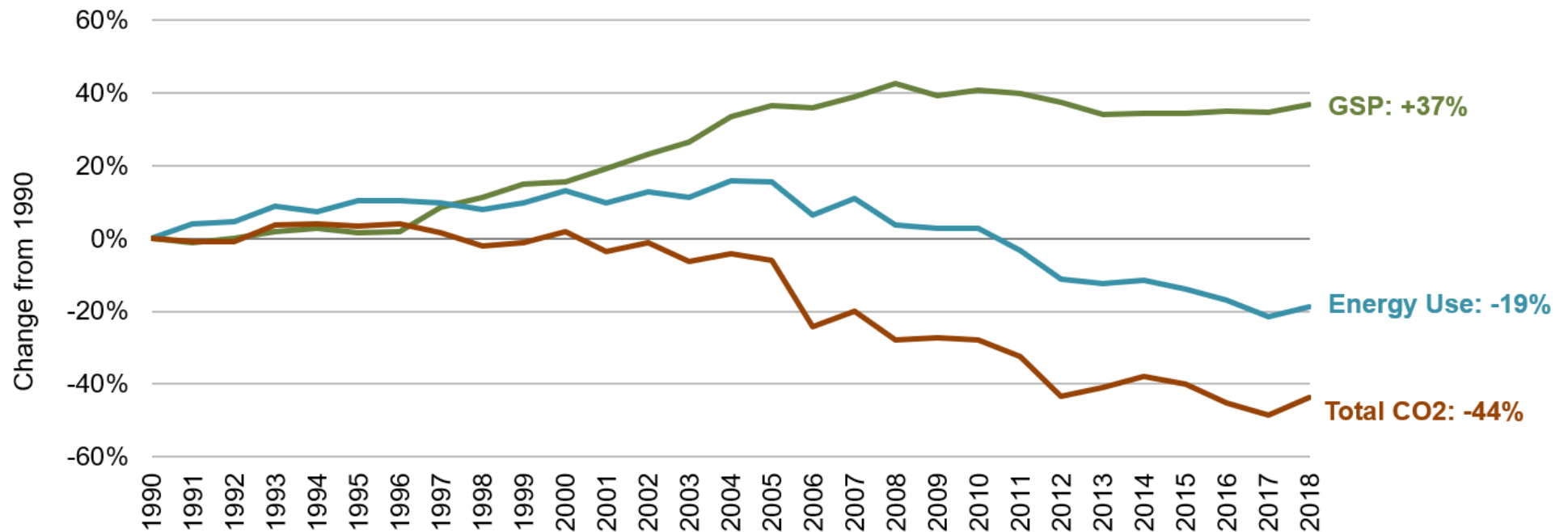
Delaware
1990-2018



Per Capita Energy, Economic and Climate Indicators



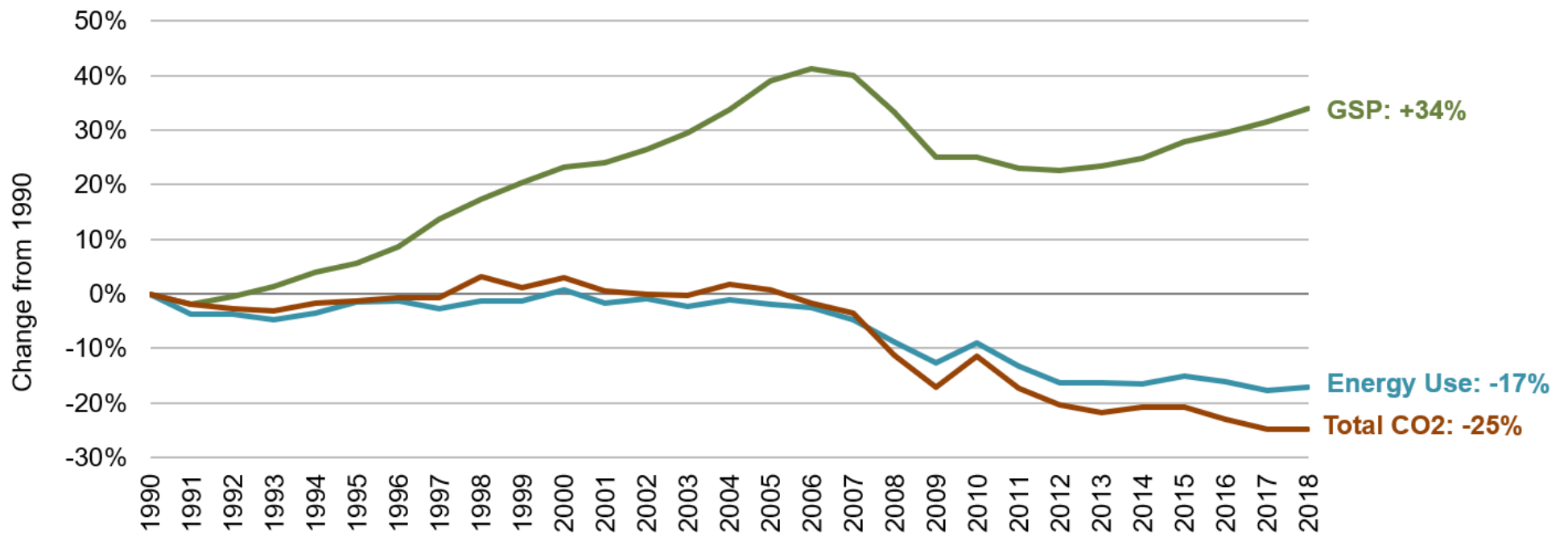
District of Columbia
1990-2018



Per Capita Energy, Economic and Climate Indicators



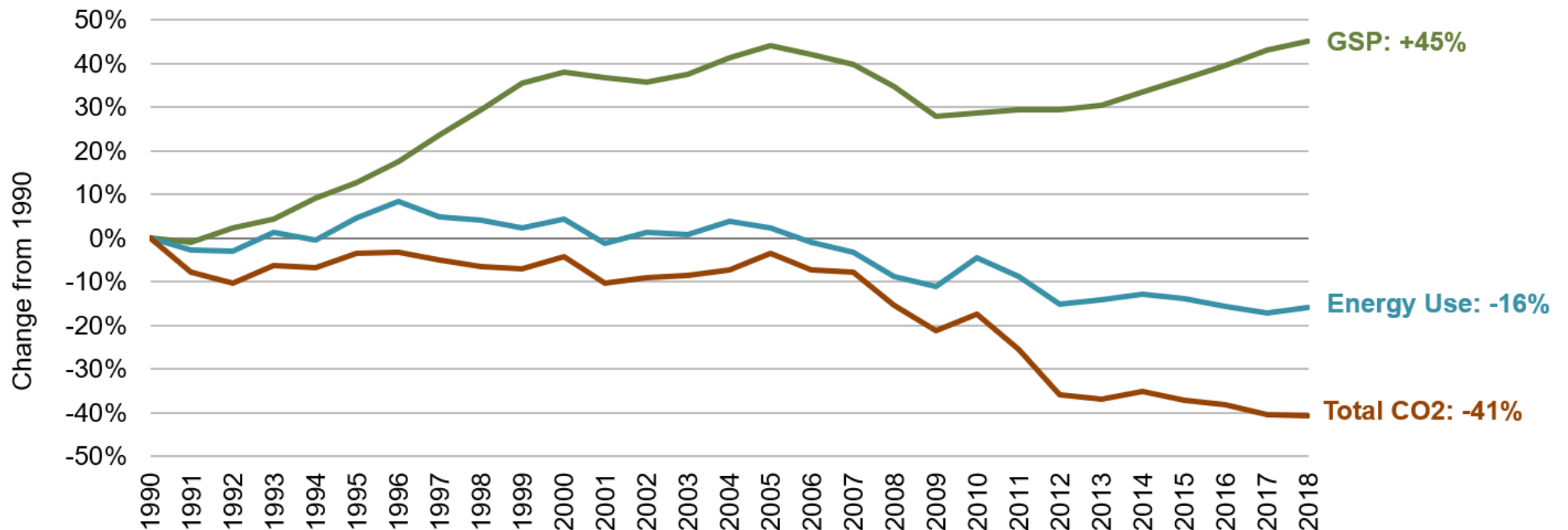
Florida
1990-2018



Per Capita Energy, Economic and Climate Indicators



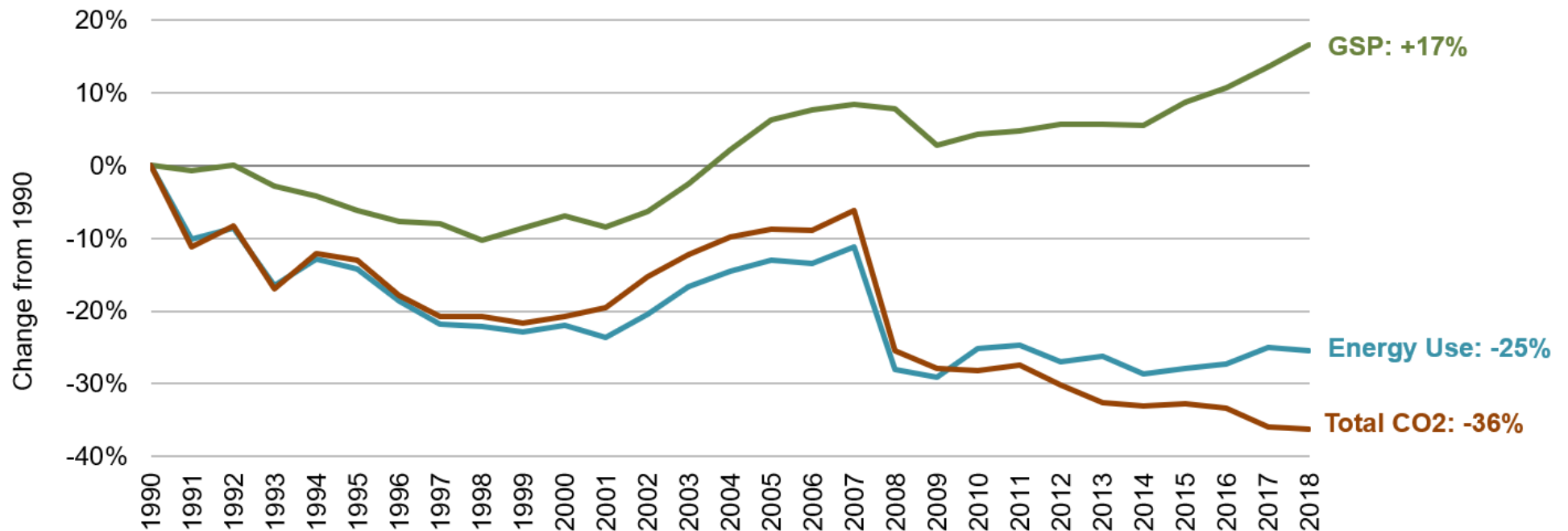
Georgia
1990-2018



Per Capita Energy, Economic and Climate Indicators



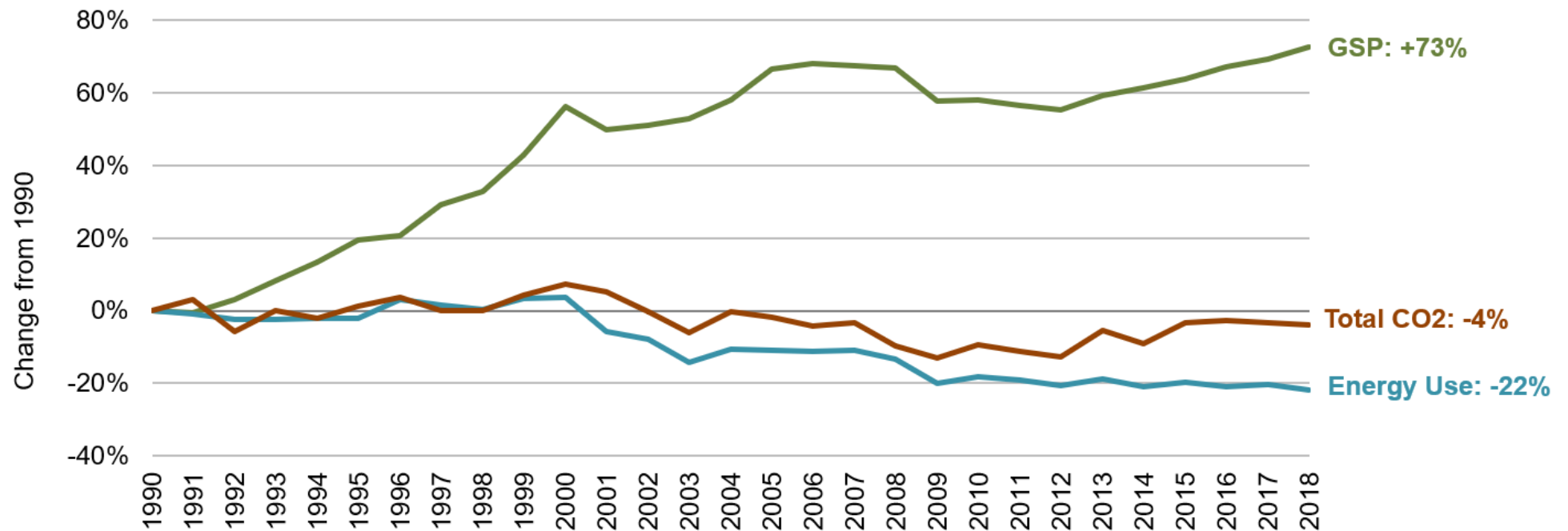
Hawaii
1990-2018



Per Capita Energy, Economic and Climate Indicators



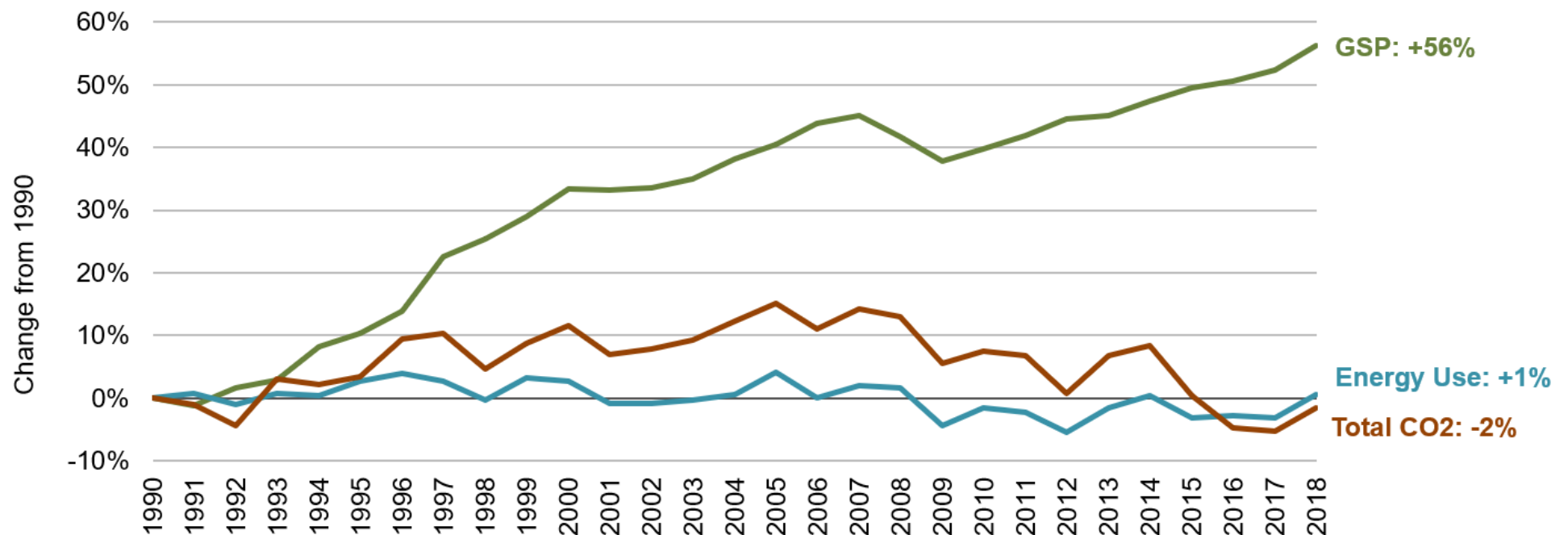
Idaho
1990-2018



Per Capita Energy, Economic and Climate Indicators



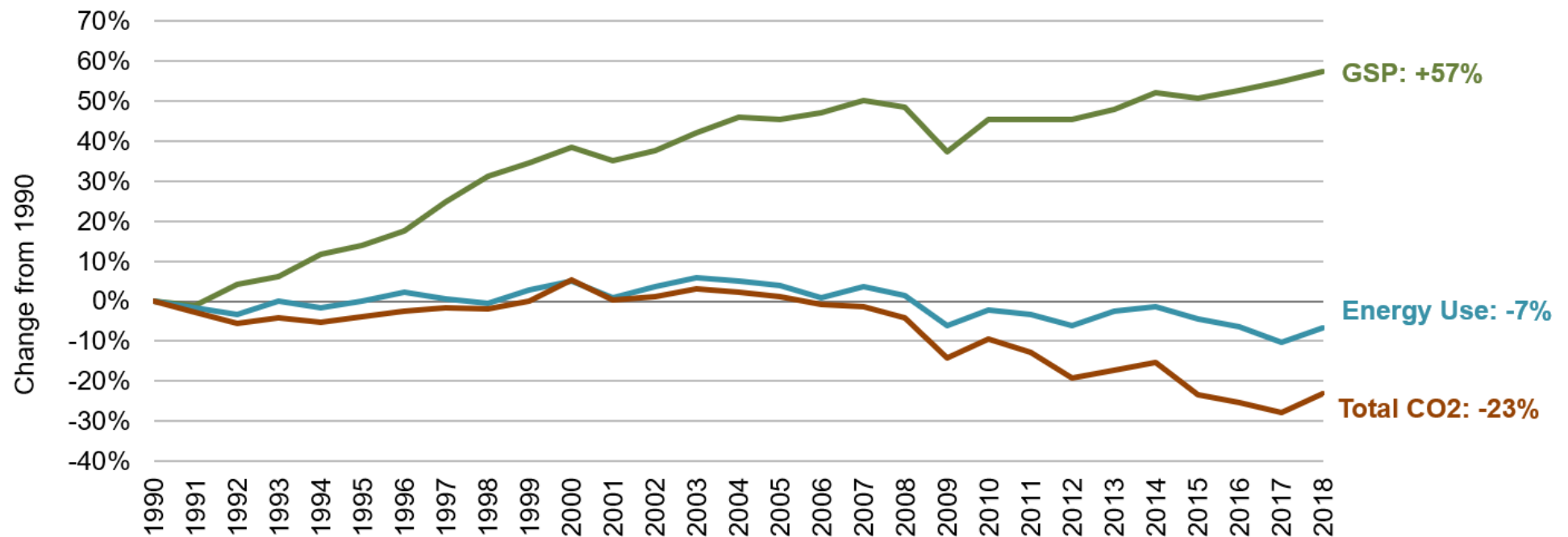
Illinois
1990-2018



Per Capita Energy, Economic and Climate Indicators



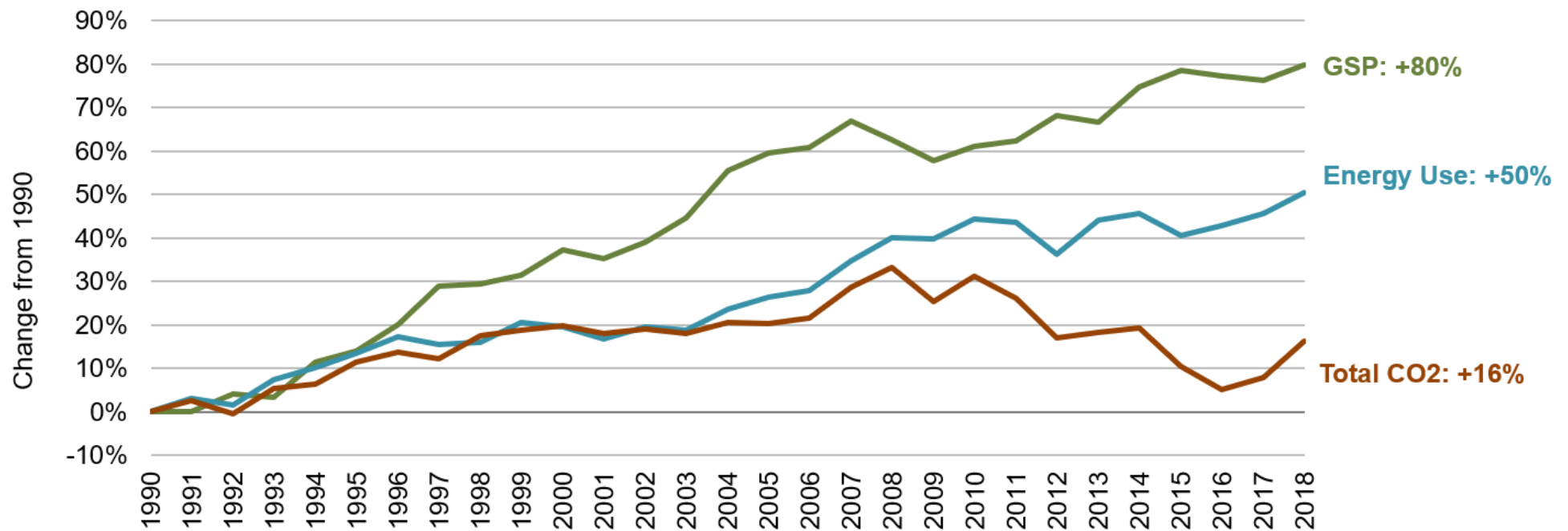
Indiana
1990-2018



Per Capita Energy, Economic and Climate Indicators



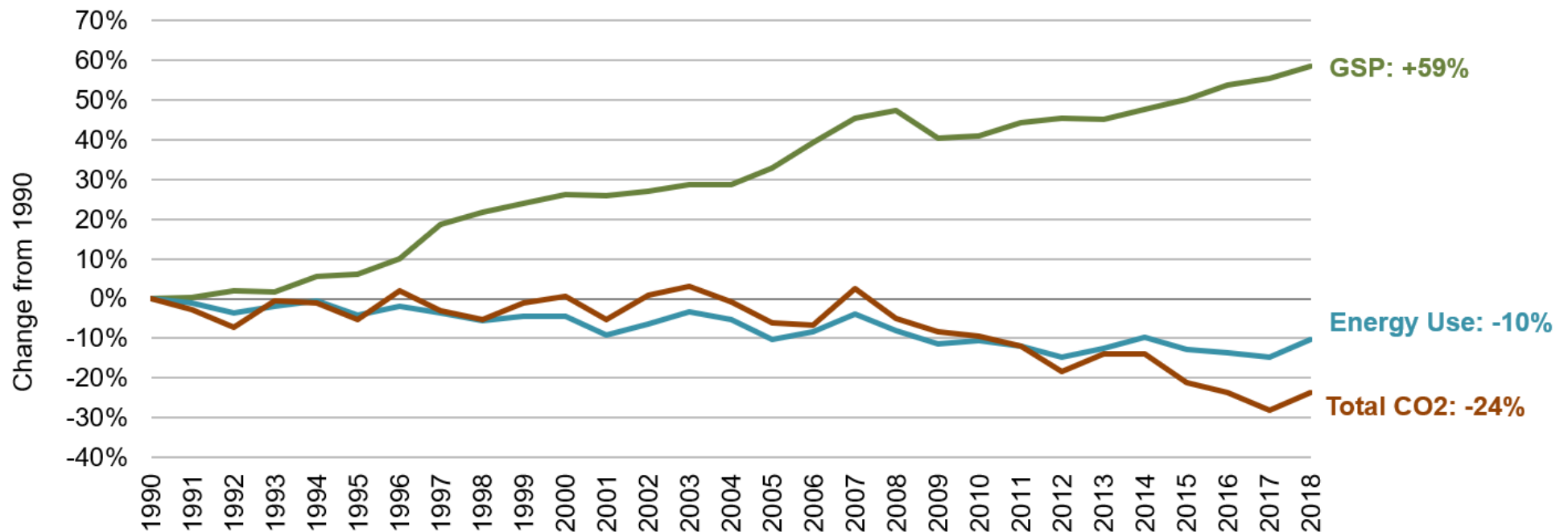
Iowa
1990-2018



Per Capita Energy, Economic and Climate Indicators



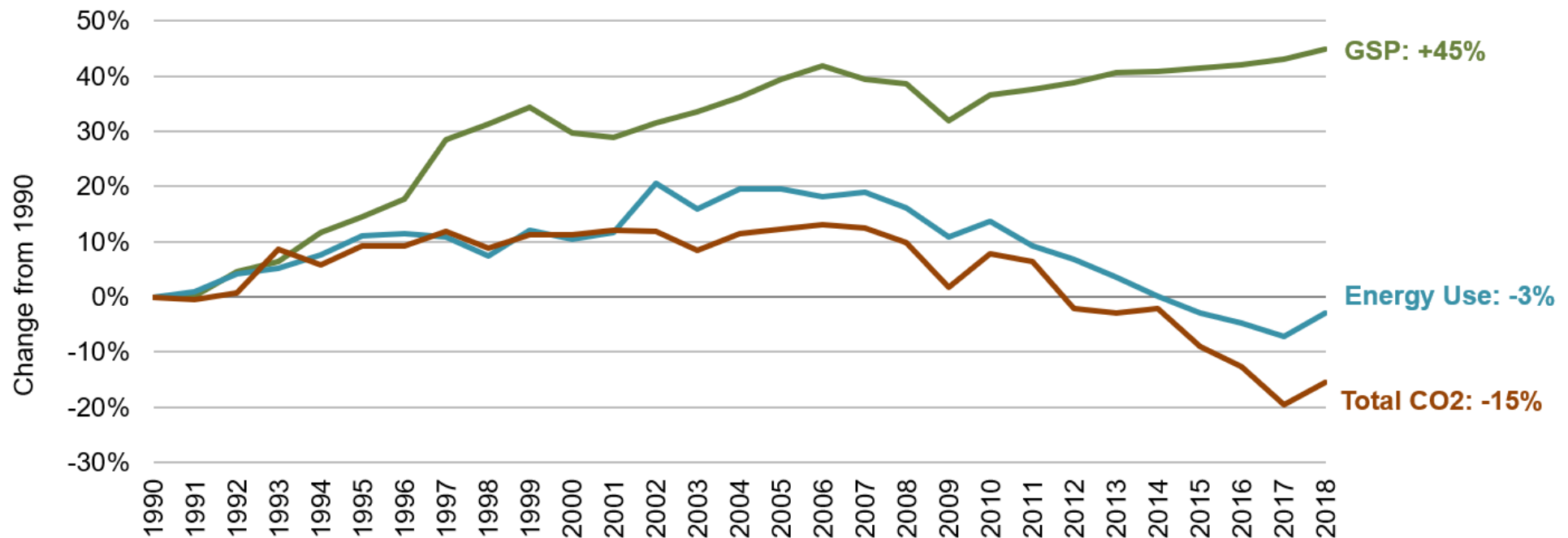
Kansas
1990-2018



Per Capita Energy, Economic and Climate Indicators



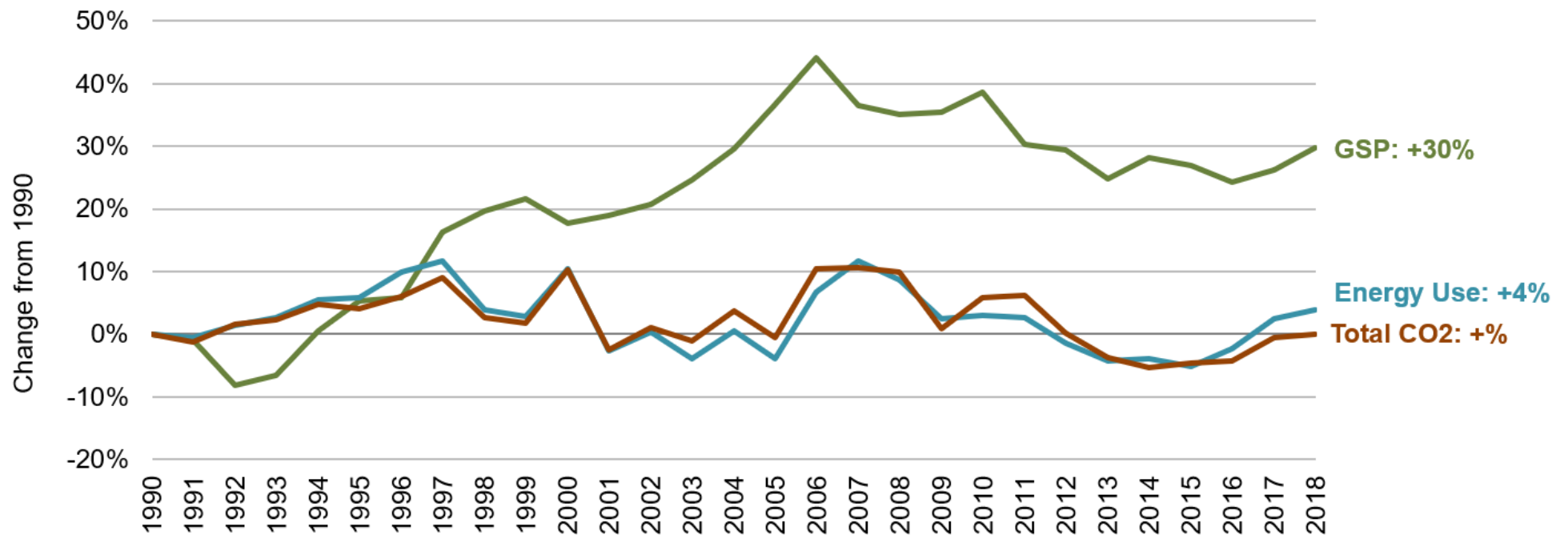
Kentucky
1990-2018



Per Capita Energy, Economic and Climate Indicators



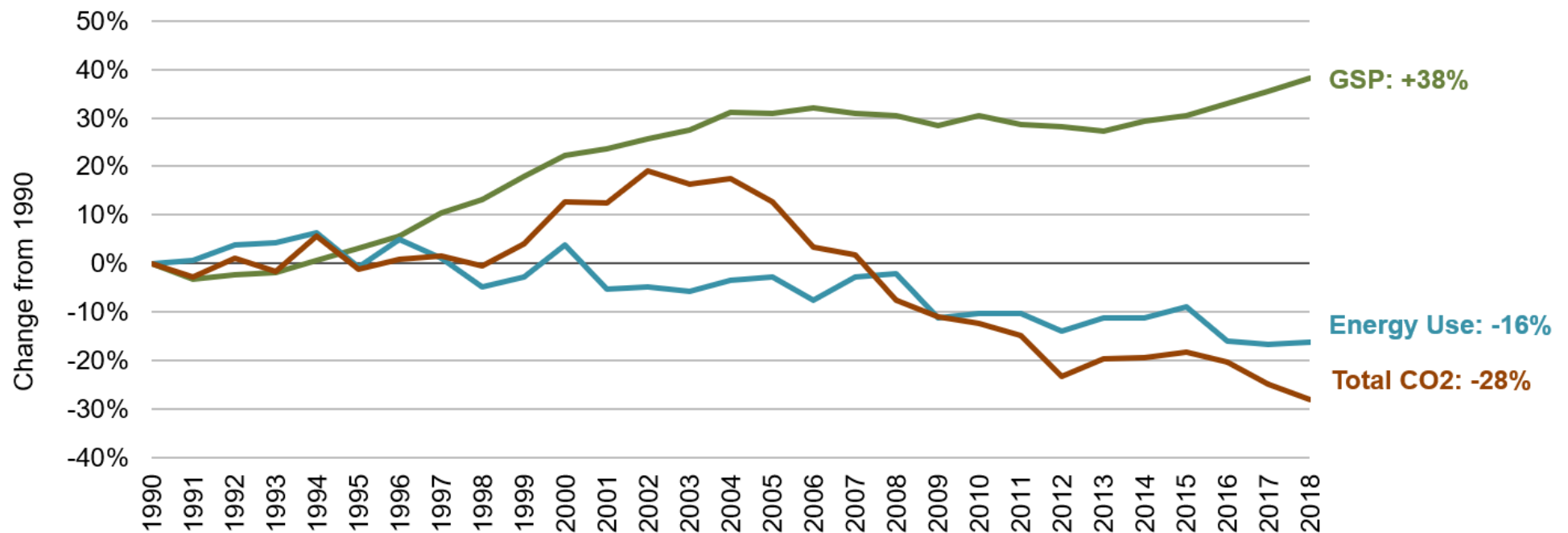
Louisiana
1990-2018



Per Capita Energy, Economic and Climate Indicators



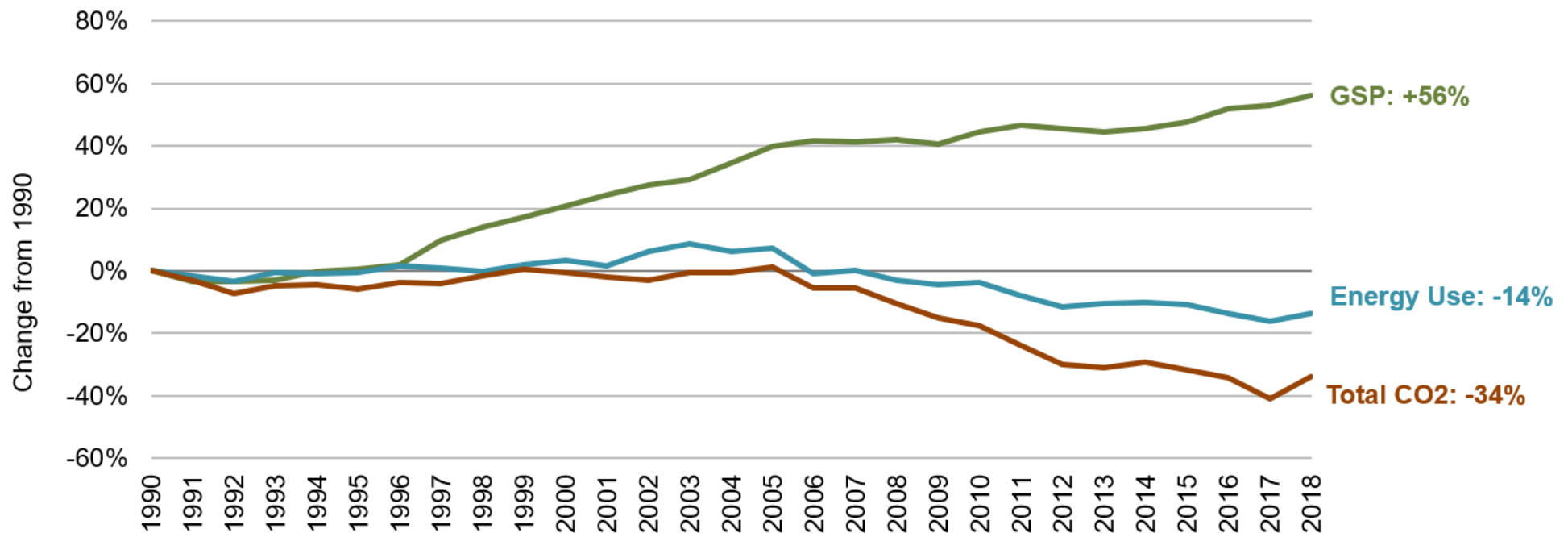
Maine
1990-2018



Per Capita Energy, Economic and Climate Indicators



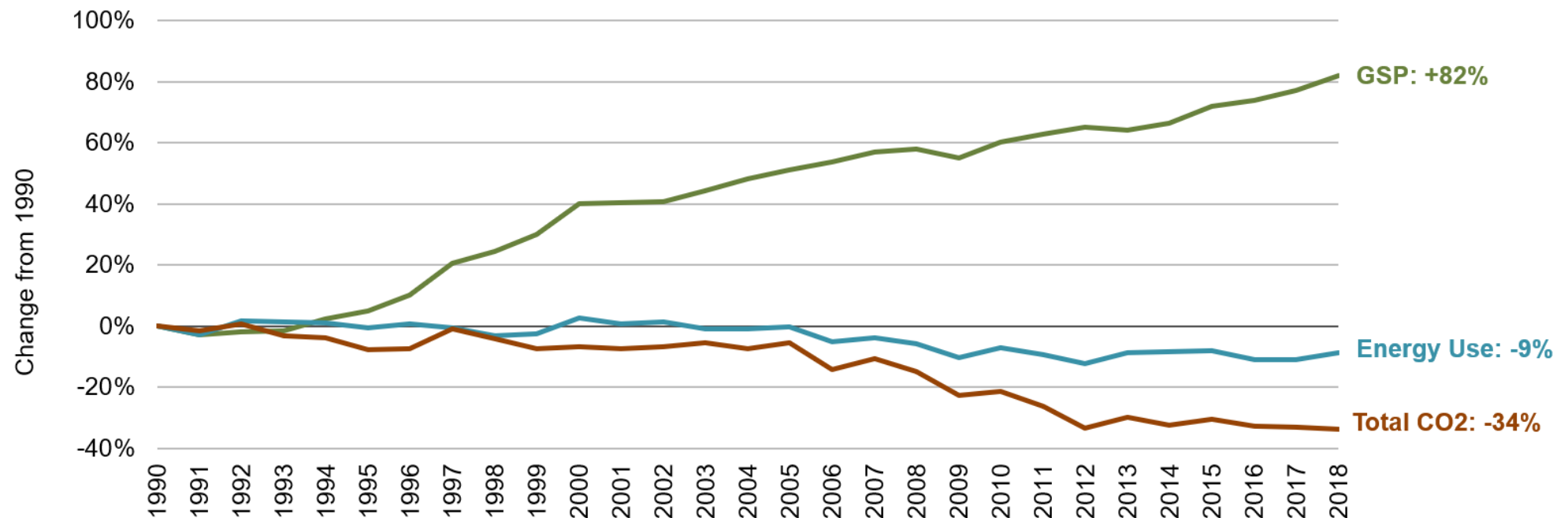
Maryland
1990-2018



Per Capita Energy, Economic and Climate Indicators



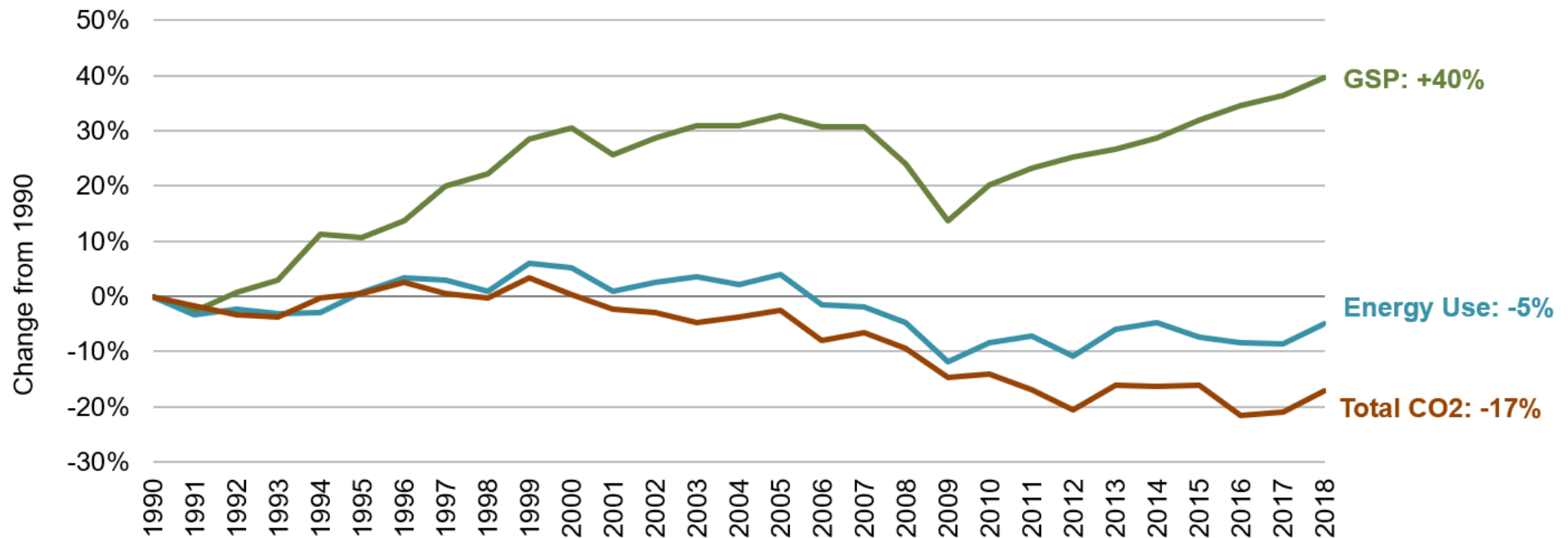
Massachusetts
1990-2018



Per Capita Energy, Economic and Climate Indicators



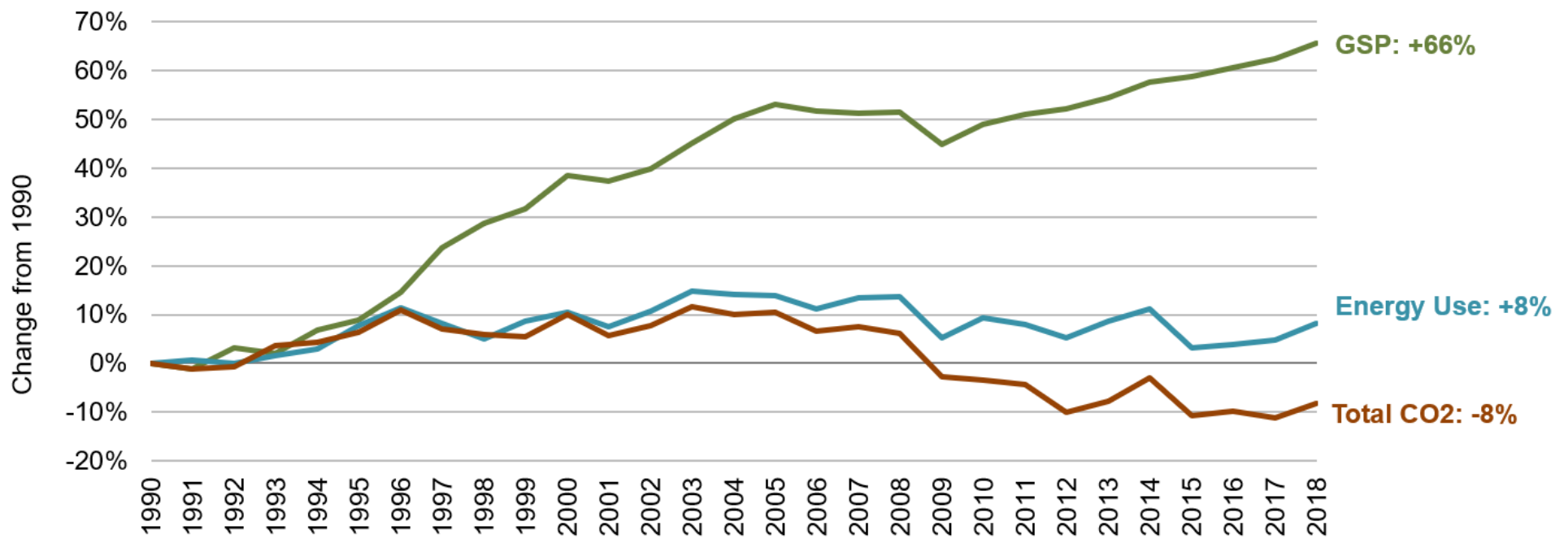
Michigan
1990-2018



Per Capita Energy, Economic and Climate Indicators



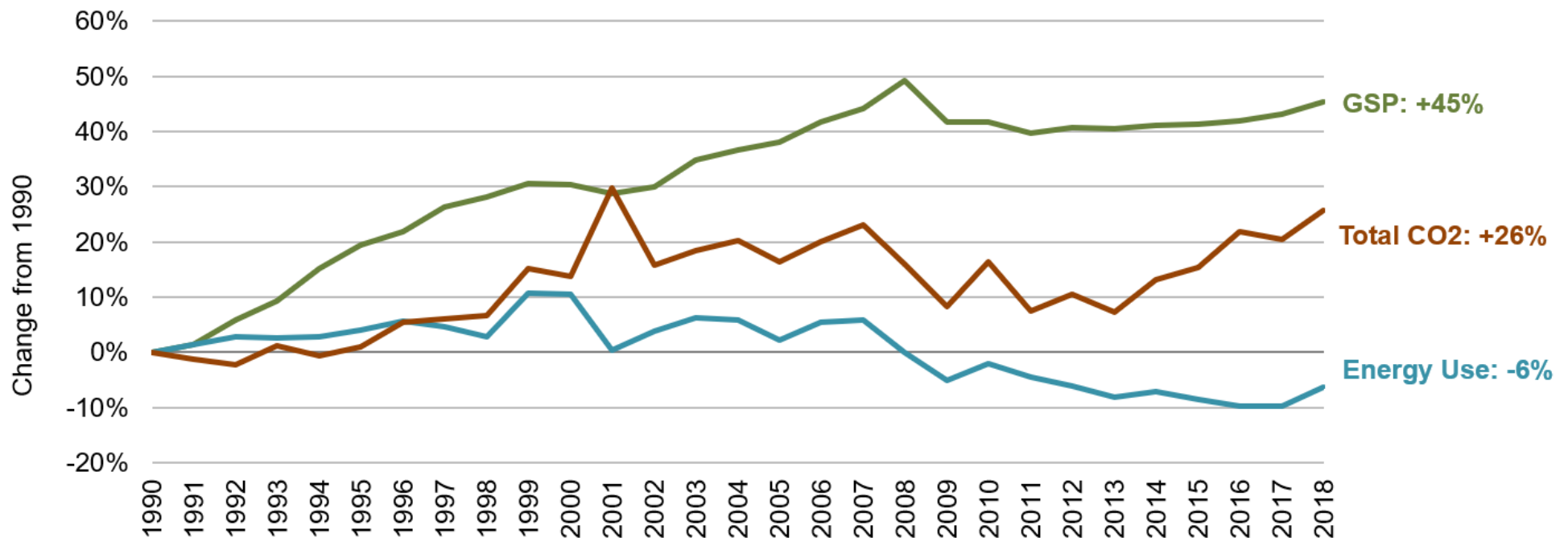
Minnesota
1990-2018



Per Capita Energy, Economic and Climate Indicators



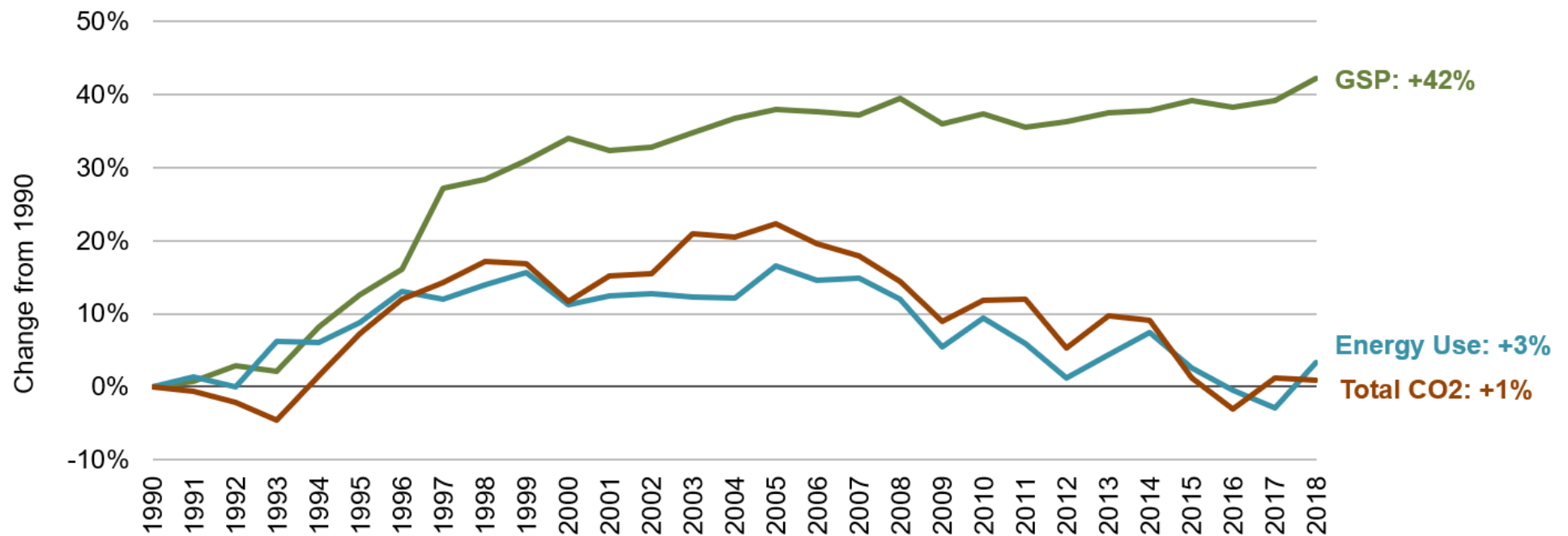
Mississippi
1990-2018



Per Capita Energy, Economic and Climate Indicators



Missouri
1990-2018



Per Capita Energy, Economic and Climate Indicators



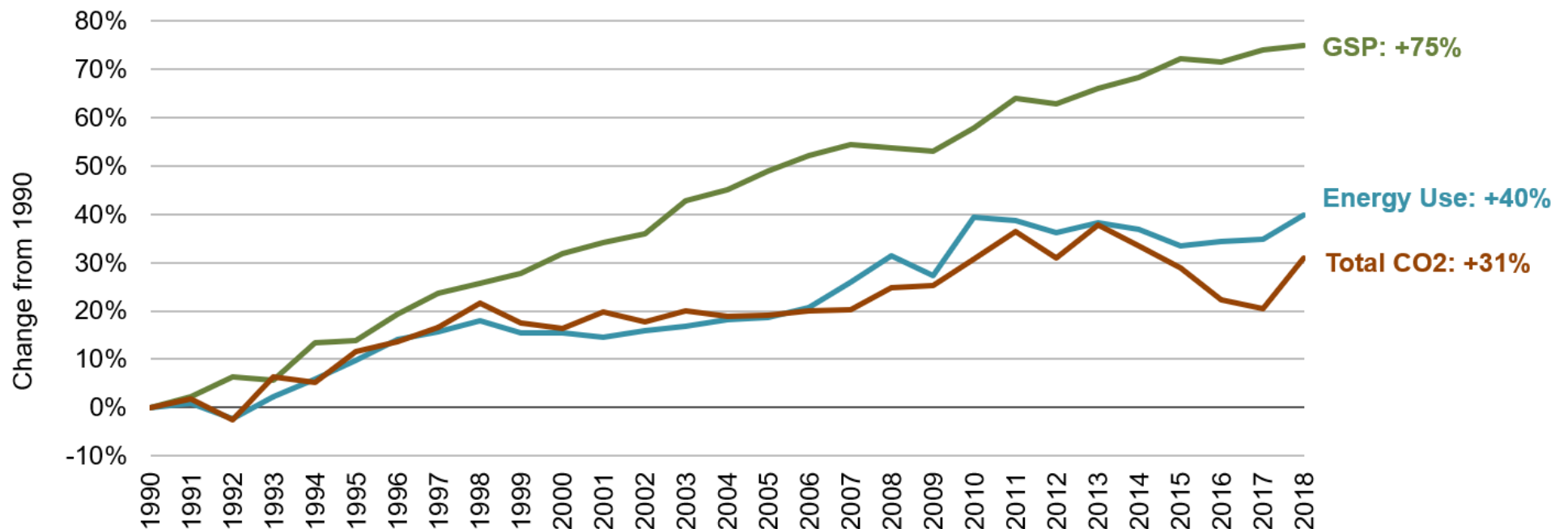
Montana
1990-2018



Per Capita Energy, Economic and Climate Indicators



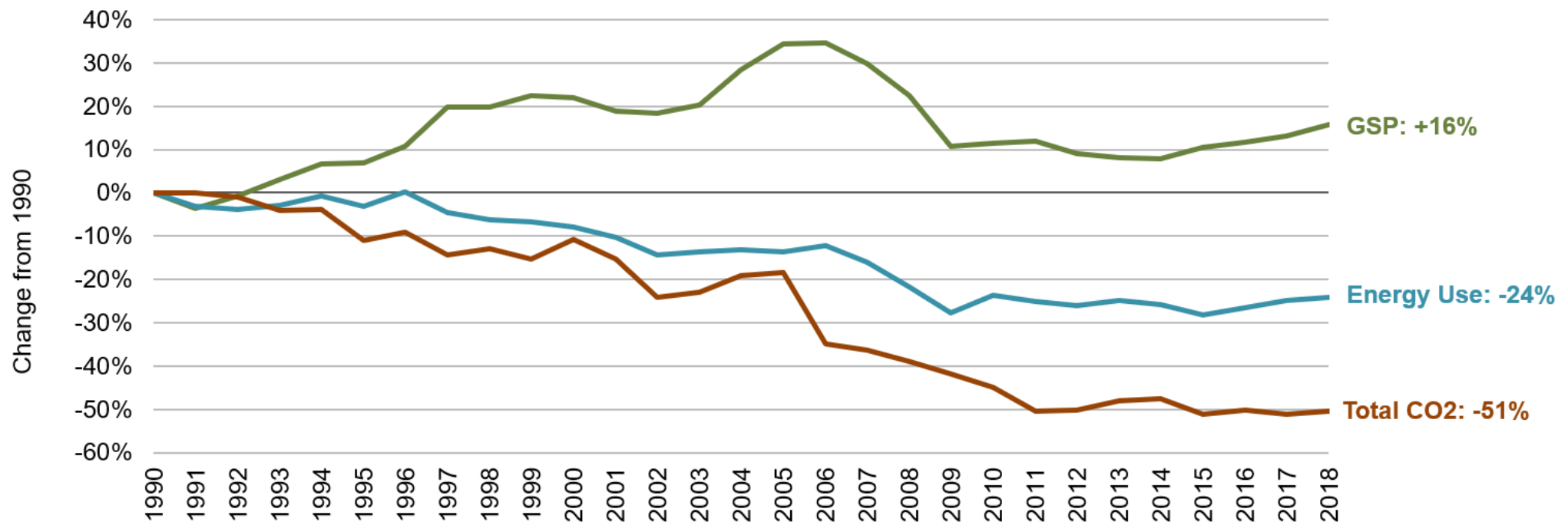
Nebraska
1990-2018



Per Capita Energy, Economic and Climate Indicators



Nevada
1990-2018



Per Capita Energy, Economic and Climate Indicators



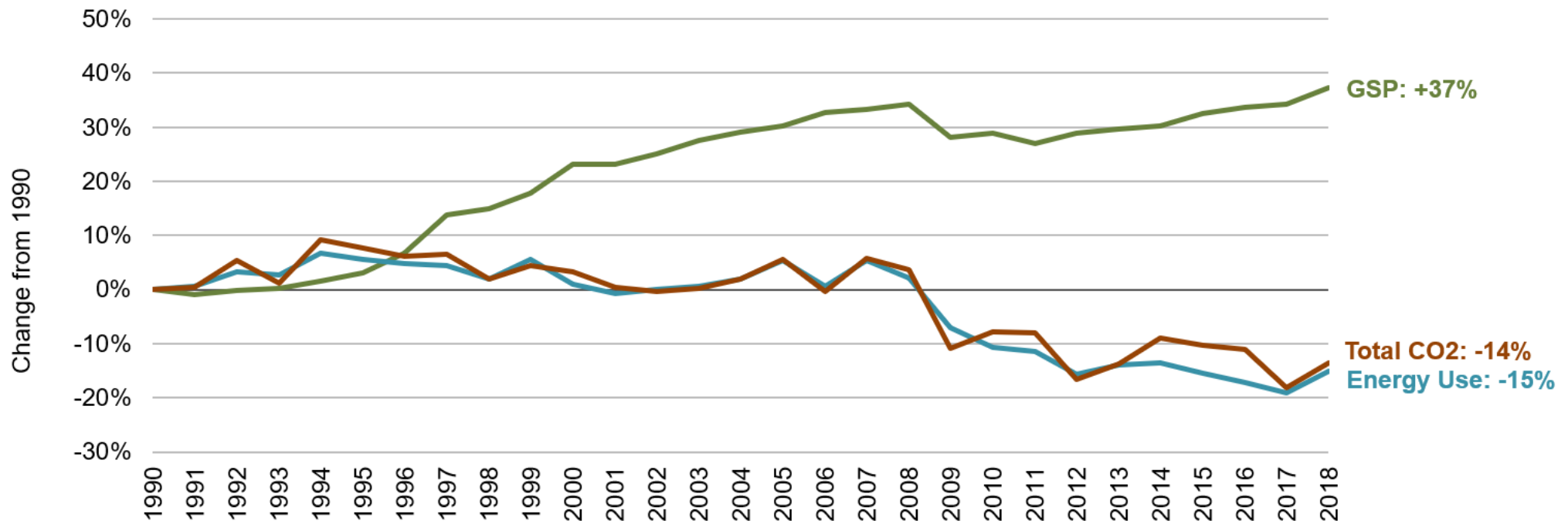
New Hampshire
1990-2018



Per Capita Energy, Economic and Climate Indicators



New Jersey
1990-2018



Per Capita Energy, Economic and Climate Indicators



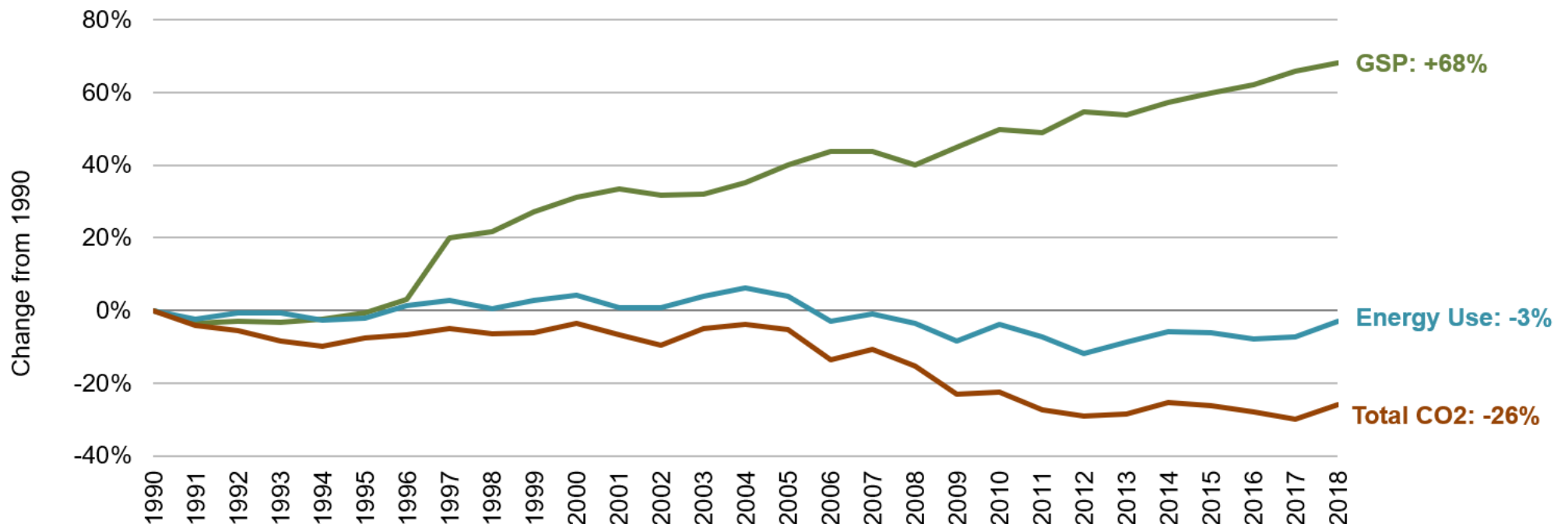
New Mexico
1990-2018



Per Capita Energy, Economic and Climate Indicators



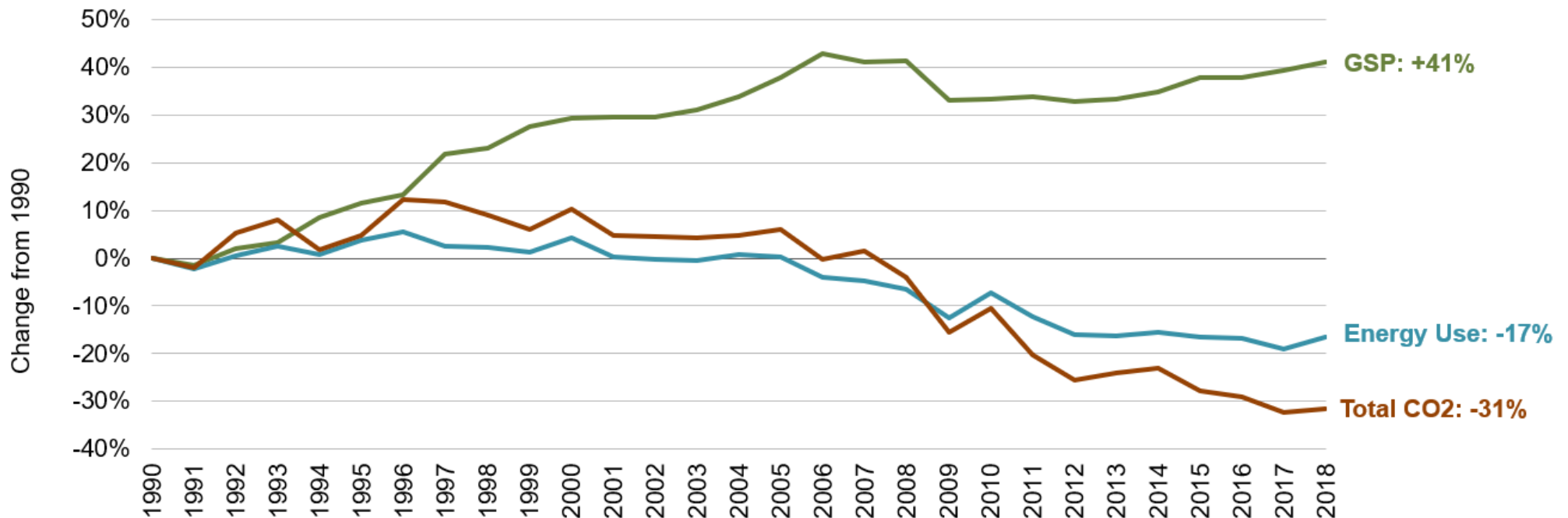
New York
1990-2018



Per Capita Energy, Economic and Climate Indicators



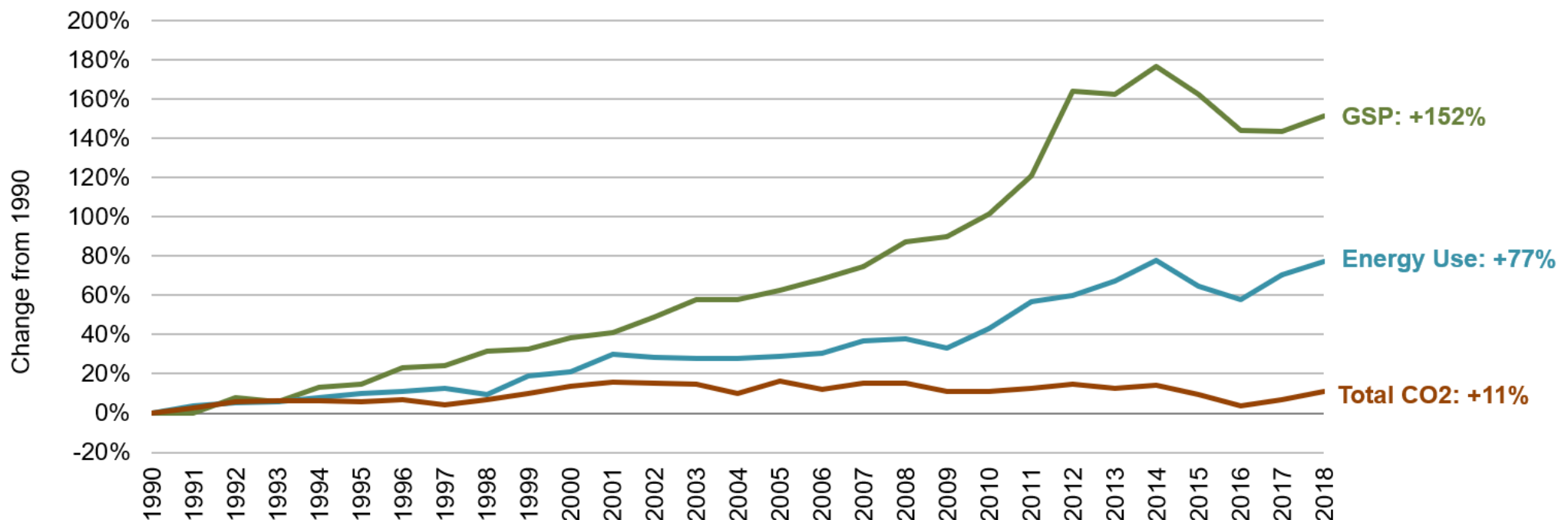
North Carolina
1990-2018



Per Capita Energy, Economic and Climate Indicators



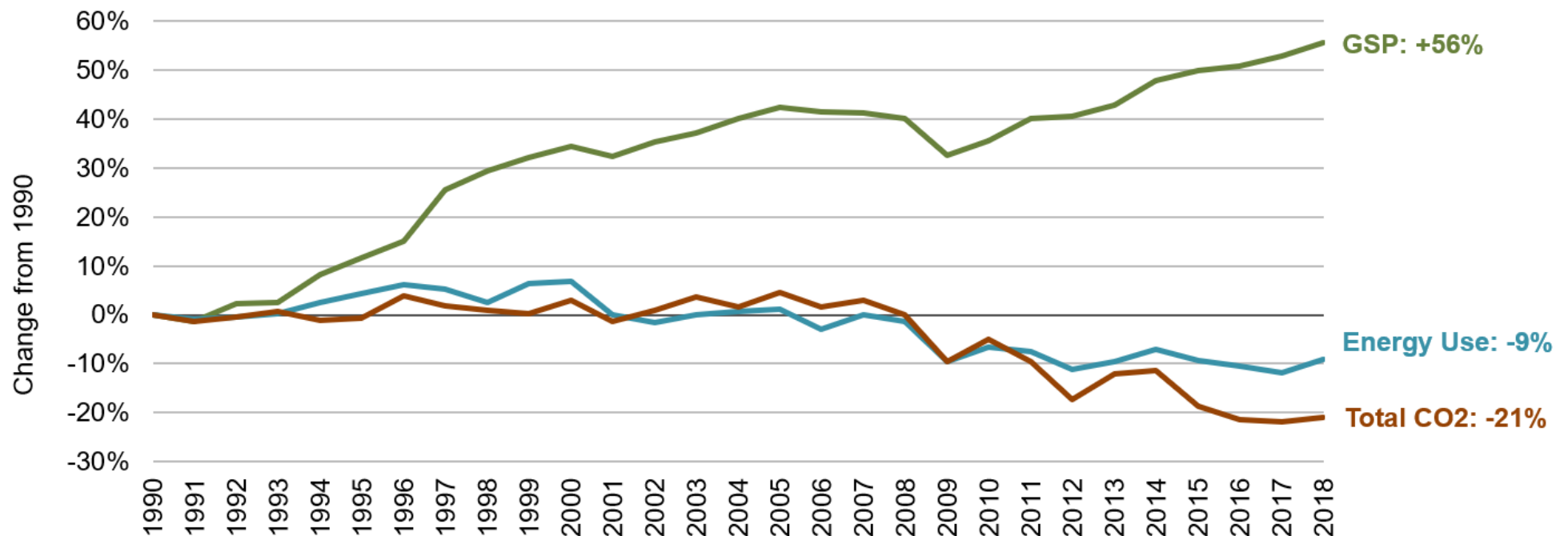
North Dakota
1990-2018



Per Capita Energy, Economic and Climate Indicators



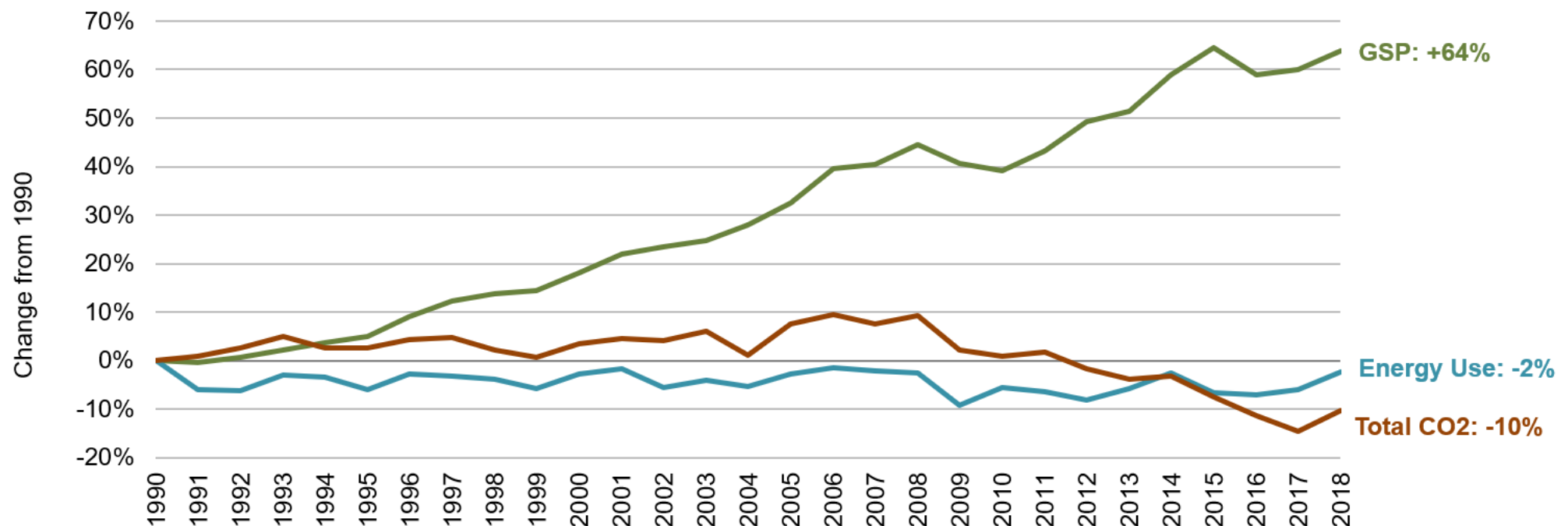
Ohio
1990-2018



Per Capita Energy, Economic and Climate Indicators



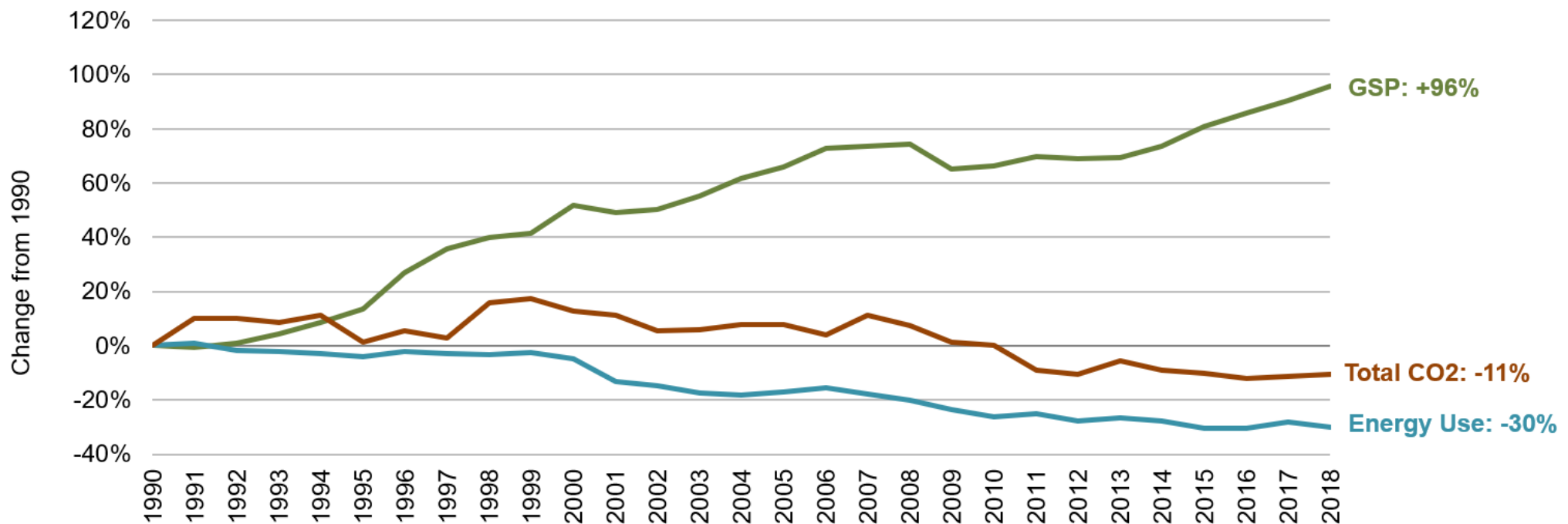
Oklahoma
1990-2018



Per Capita Energy, Economic and Climate Indicators



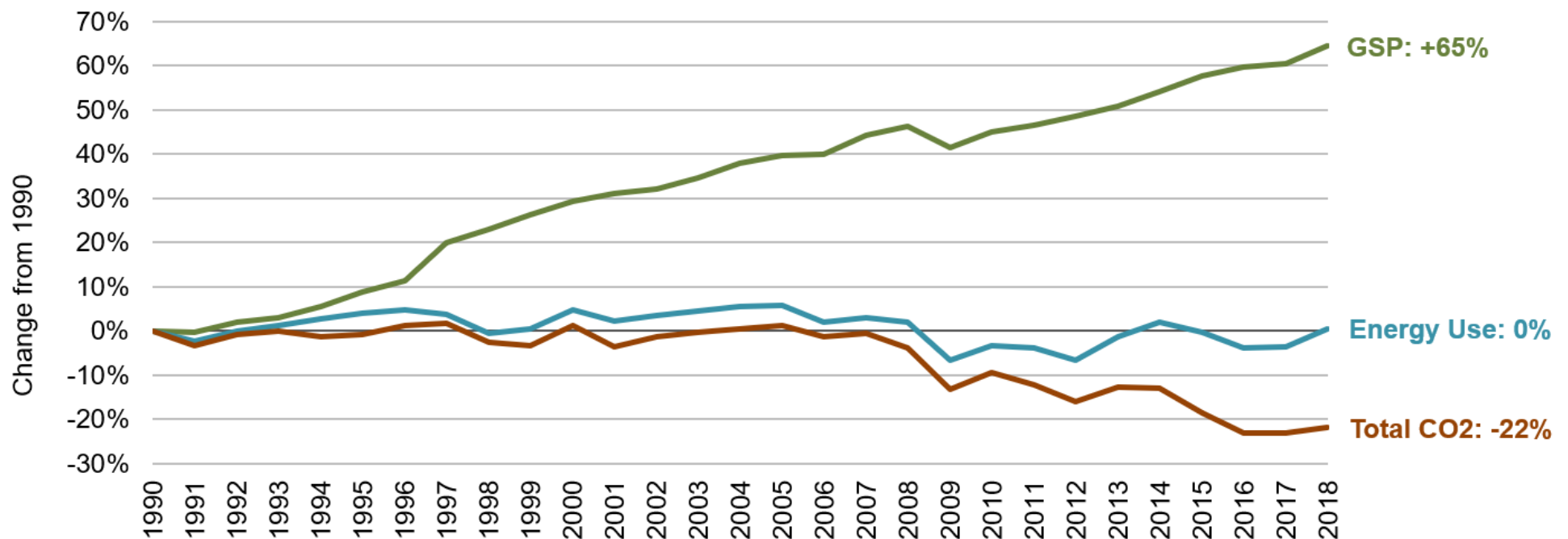
Oregon
1990-2018



Per Capita Energy, Economic and Climate Indicators



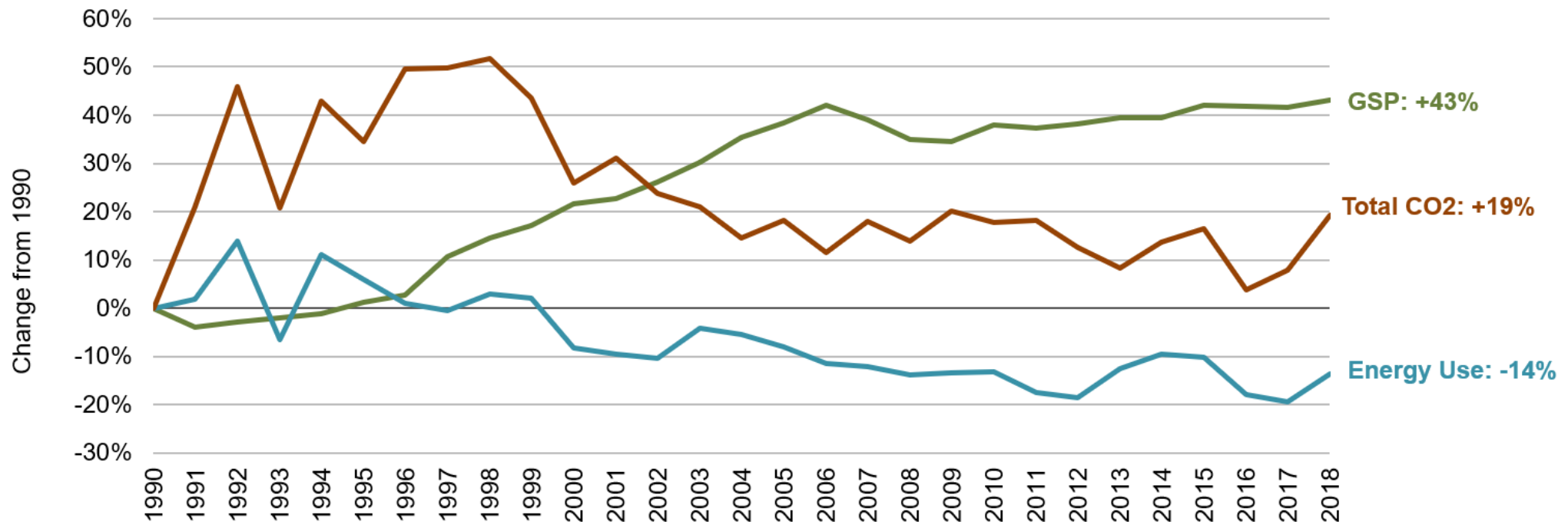
Pennsylvania
1990-2018



Per Capita Energy, Economic and Climate Indicators



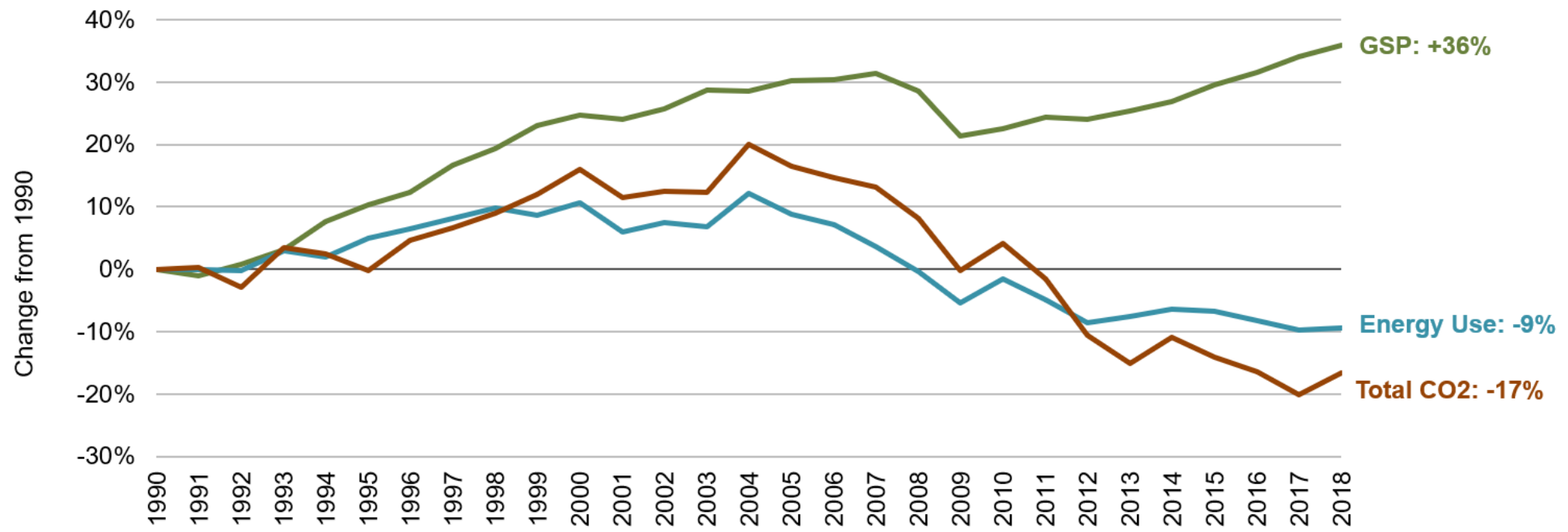
Rhode Island
1990-2018



Per Capita Energy, Economic and Climate Indicators



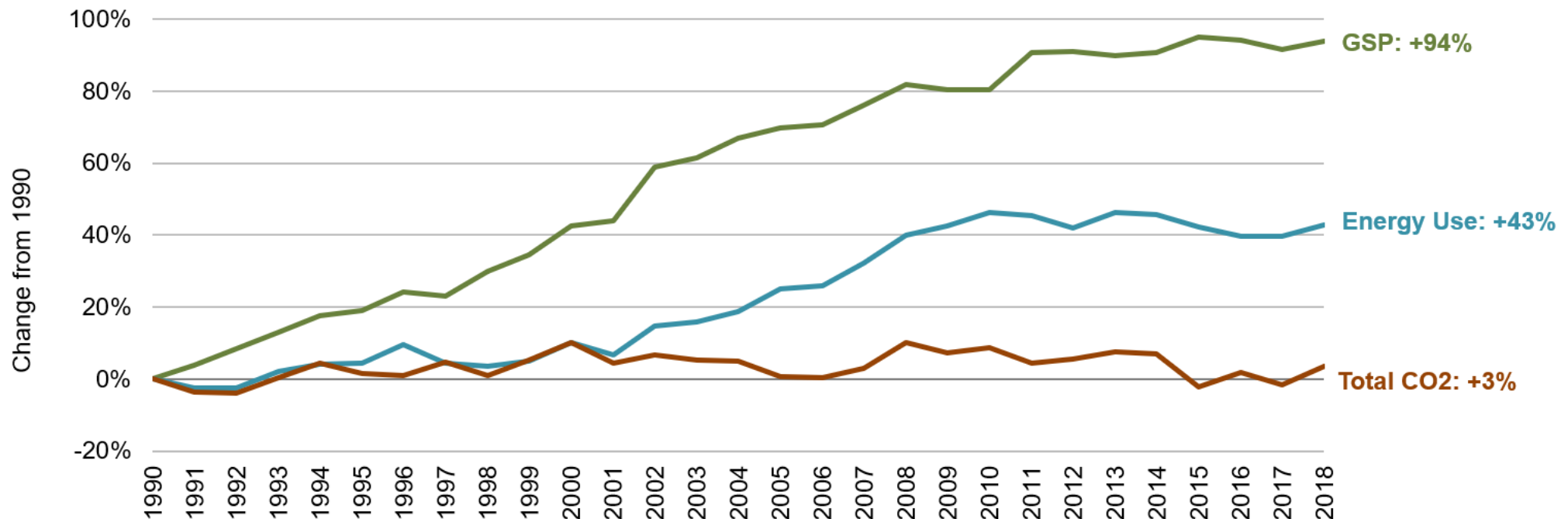
South Carolina
1990-2018



Per Capita Energy, Economic and Climate Indicators



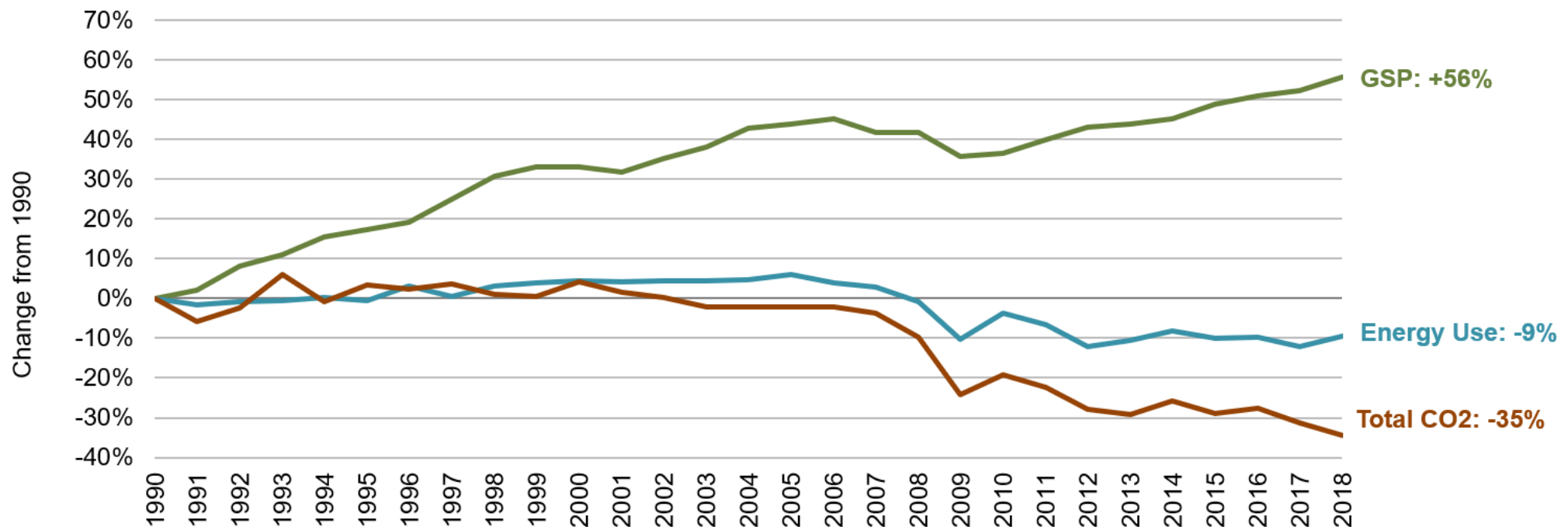
South Dakota
1990-2018



Per Capita Energy, Economic and Climate Indicators



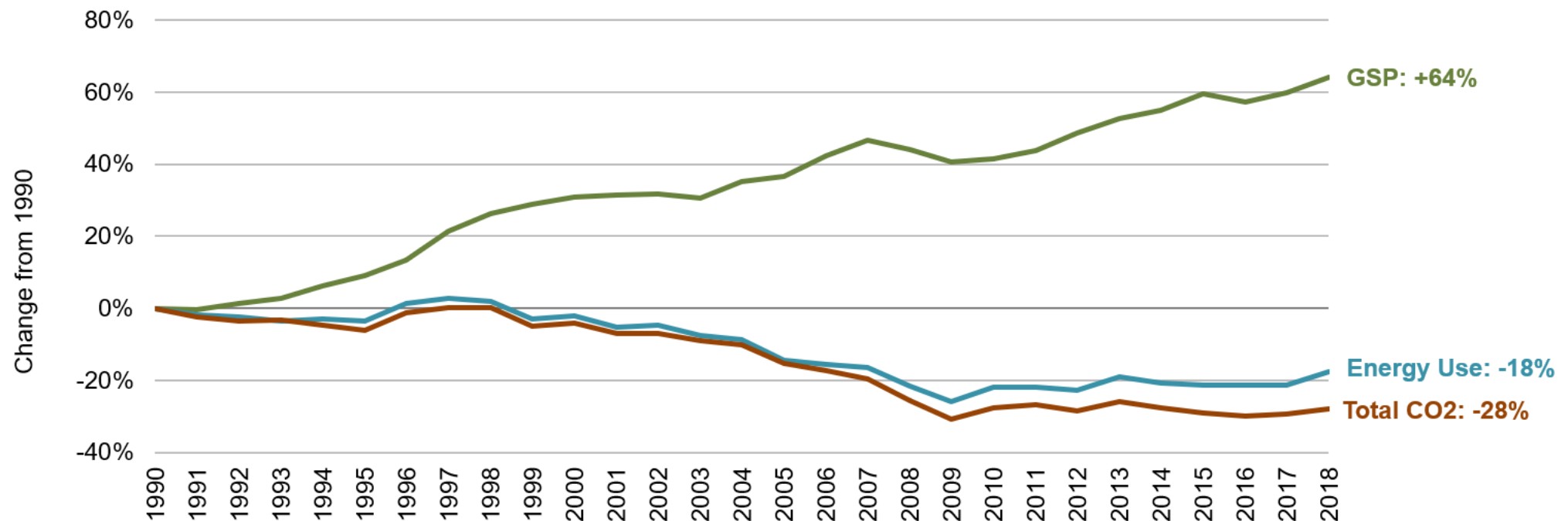
Tennessee
1990-2018



Per Capita Energy, Economic and Climate Indicators



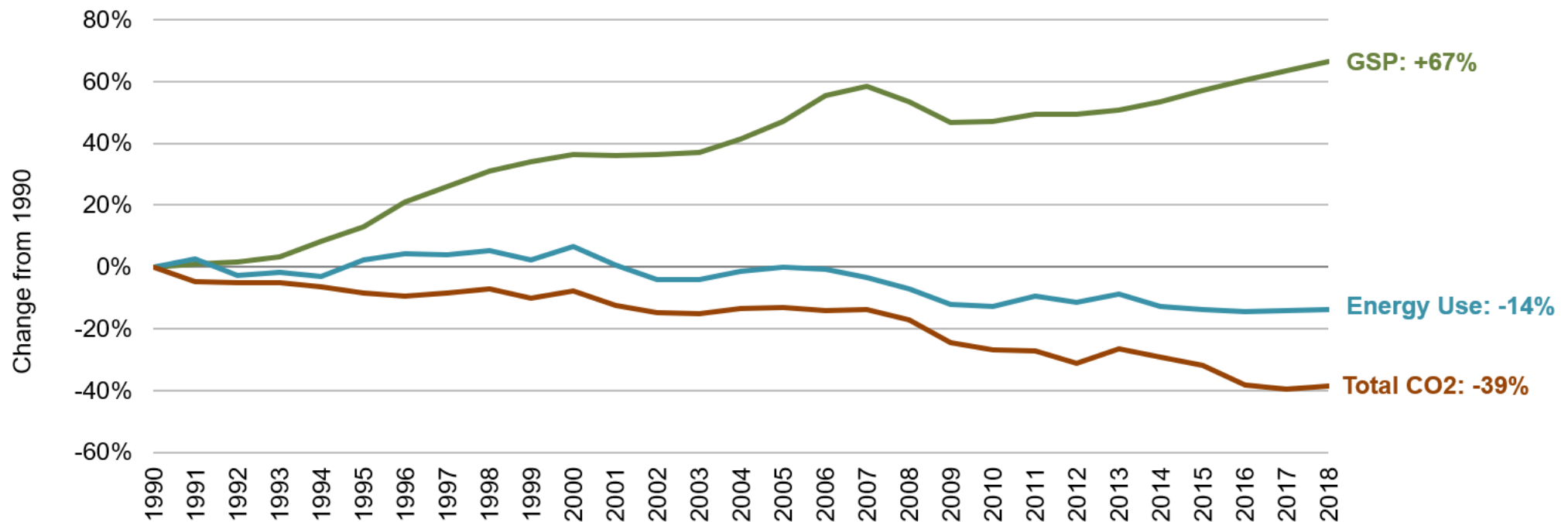
Texas
1990-2018



Per Capita Energy, Economic and Climate Indicators



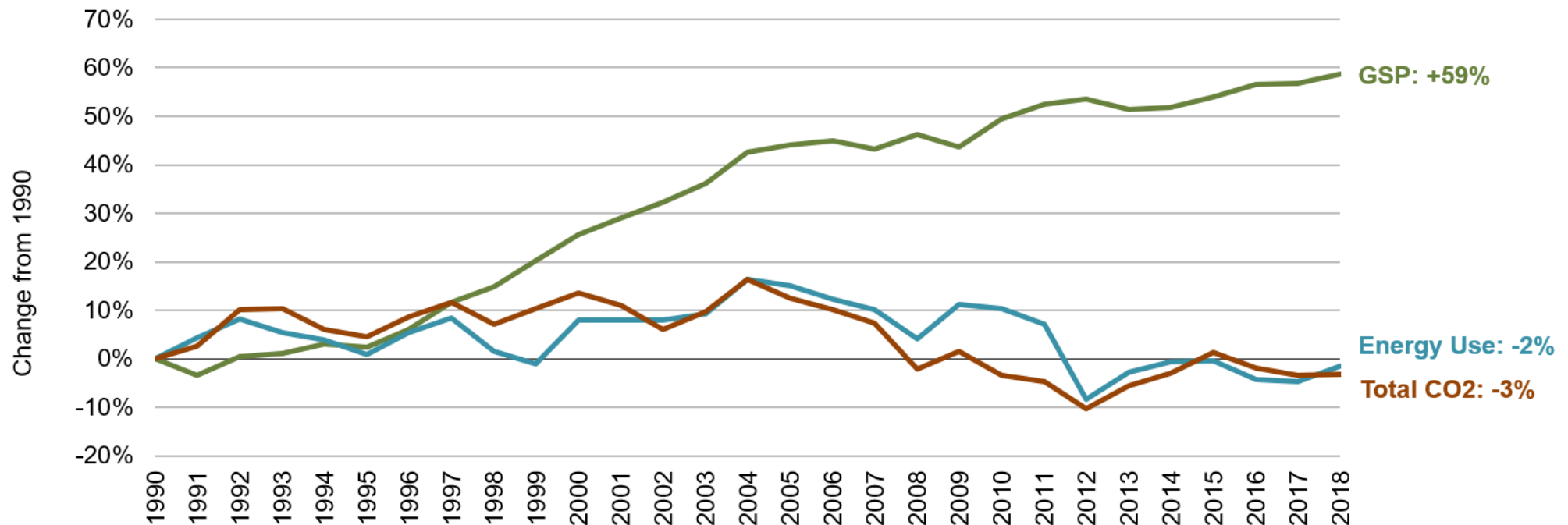
Utah
1990-2018



Per Capita Energy, Economic and Climate Indicators



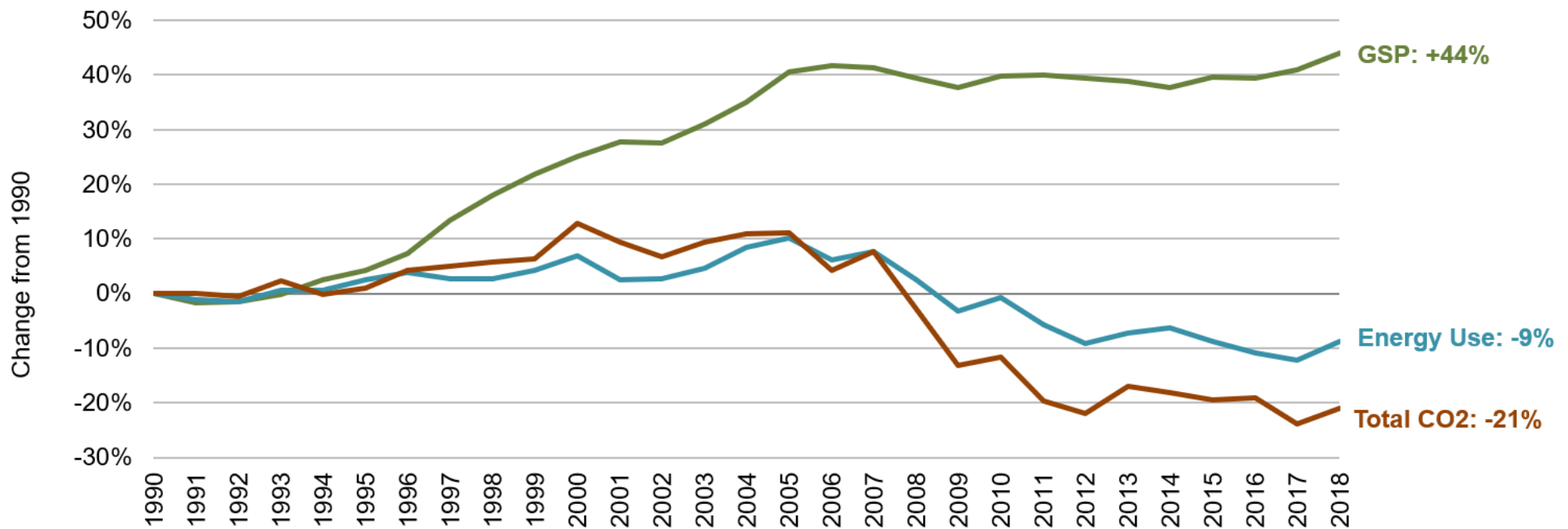
Vermont
1990-2018



Per Capita Energy, Economic and Climate Indicators



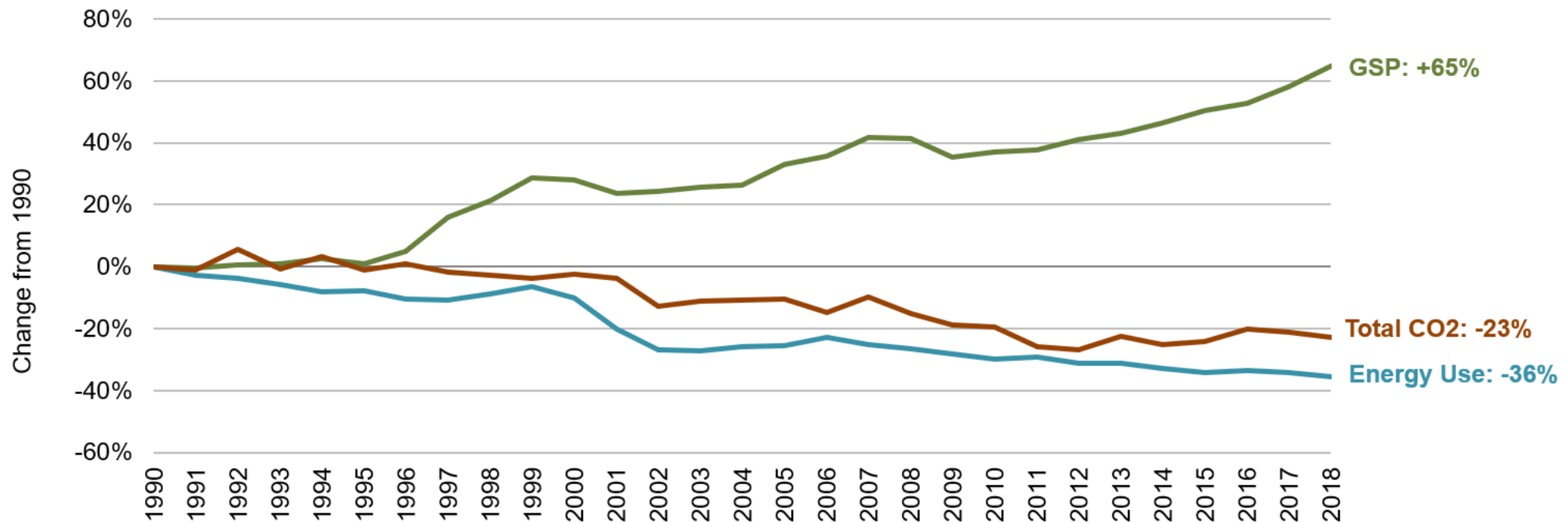
Virginia
1990-2018



Per Capita Energy, Economic and Climate Indicators



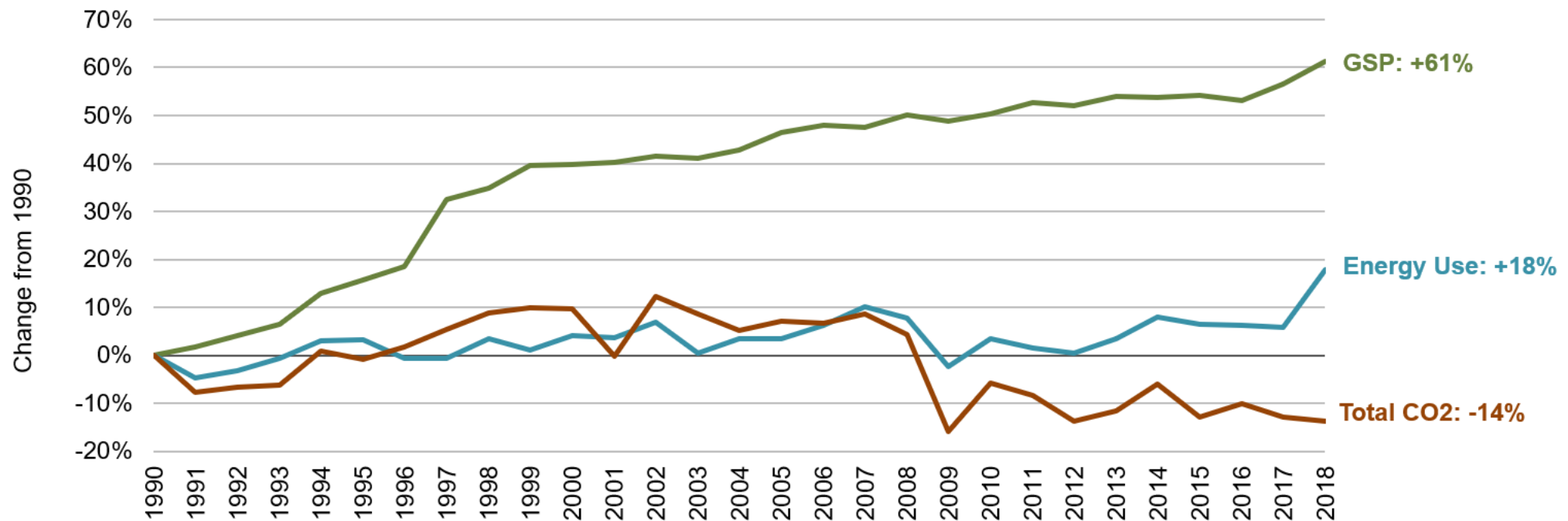
Washington
1990-2018



Per Capita Energy, Economic and Climate Indicators



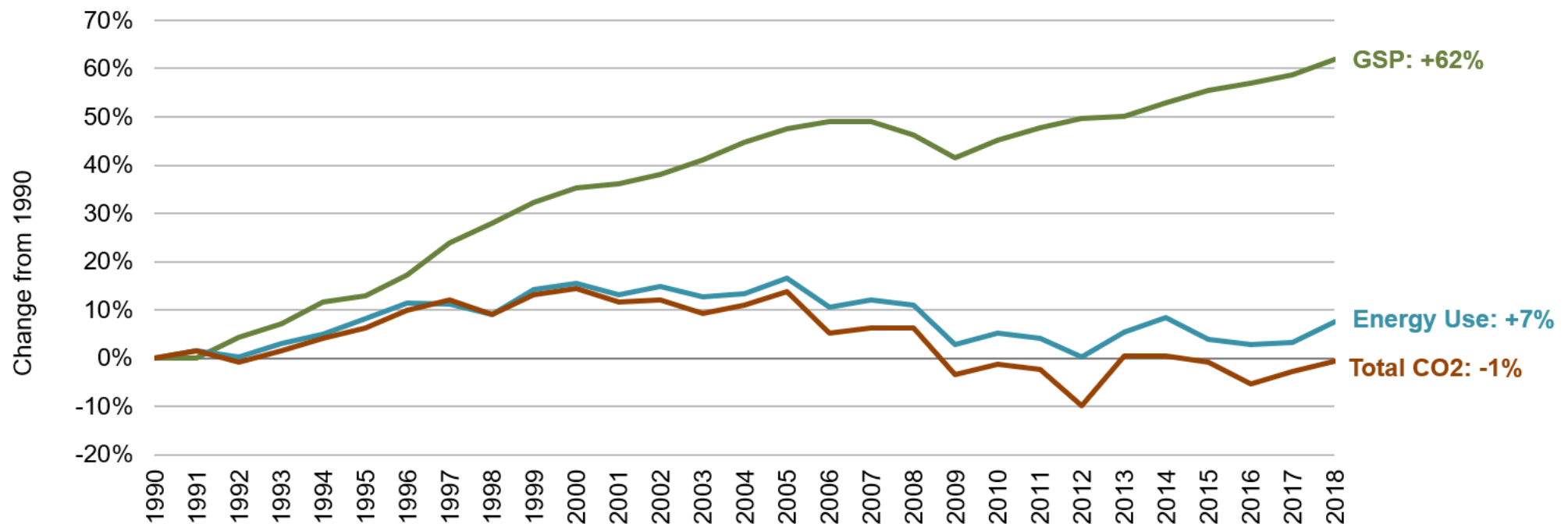
West Virginia
1990-2018



Per Capita Energy, Economic and Climate Indicators



Wisconsin
1990-2018



Per Capita Energy, Economic and Climate Indicators



Wyoming
1990-2018

